



dun & bradstreet

**CITY
VITALITY
INDEX**

Q1 2025

**Top 100
Emerging Cities
of India**

Table of Contents

Introduction	3
Executive Summary	4
City Vitality Index (CVI)	5
Mapping Economic Activity With the CVI.....	5
Methodology	6
Interpretation of CVI.....	7
Metro Cities (Class X Cities).....	9
Emerging Cities (Non-metro).....	14
Top 100 Emerging Cities.....	28
Pan-India Distribution of the Top 100 cities (CVI Ranks) - Q1 2025	28
Appendix.....	33

Introduction

Although urbanization has been one of humanity's defining storylines in the past century, the World Bank estimates that 47% of the world's population still lives in rural areas. India is undergoing rapid urbanization, with its urban population expected to reach 600 million (40% of the population) by 2036, up from 31% in 2011. Urban areas are projected to contribute 70% towards GDP, up from 45% in the 1990s. The effectiveness of India's urban transformation will be crucial in achieving its goal of becoming a developed nation by 2047, which will mark 100 years of independence for the country. In recognition of the critical role of cities in the nation's economic growth, initiatives such as SMART City, JNNURM, PMAY-U, and PM SVANidhi have been launched to transform the urban landscape and enhance economic development.

From an economic standpoint, the country's urban areas have some peculiar features:

- India's urban population has grown 40% since liberalization
- 60% of the expenditure in urban areas is towards discretionary products
- States with a higher proportion of urban areas - such as Maharashtra (45.2%) and Gujarat (42.6%) - tend to grow faster and attract higher investments
- Urban areas tend to have higher formalisation; 44.0% of the urban workforce is classified as salaried class, while this number is 12.7% in rural areas
- Urban areas are also service sector hubs, with 23% of the services sector being concentrated around cities.

Urban India is more than a consumer hub – it drives the services sector and high-growth industries. With strong connectivity and a dense, affluent market, cities enable business expansion and innovation. Moreover, the urbanization of rural areas will create new census towns and reclassified urban bodies, thereby ushering in fresh opportunities. Beyond the traditional tier system, metro vs. non-metro distinctions will shape industry dynamics and regional growth.

Satellite Earth Observation (EO) data serves as a powerful proxy for economic growth, strongly correlating with economic activity. As rural areas urbanize, cities expand, and infrastructure modernizes, 'nightlights' intensify, and their impact is captured by satellite sensors. This report is based on a novel approach to track economic activity at regular intervals across regions that lack reliable economic data.

Executive Summary

- India's urban centres account for 63% of GDP, despite covering just under 3% of the land area, and contribute over 85% towards tax revenues.
- Mumbai, Pune, and Bengaluru remain dominant economic hubs, with Chennai climbing two positions in Q1 2025, driven by manufacturing and IT growth.
- The top 25 emerging cities are in Uttar Pradesh, Haryana, Tamil Nadu, Gujarat, Odisha, Rajasthan, Jharkhand, and Maharashtra - North, South, East and the West regions of India.
- Gandhinagar, Thane, and Surat have experienced linear growth trends, supported by significant state-driven investment plans. Notably, the Surat Economic Region (SER) is being developed with industrial clusters and tourism growth initiatives.
- Cities such as Thane (which are adjacent to metropolitan areas) are seeing exponential growth due to the development of the Mass Rapid Transit System (MRTS) and metro projects connecting industrial areas to the main city.
- Karimnagar has emerged as a potential hub for IT services and Global Capability Centres (GCCs) in recent years.
- Dhanbad has shown continued growth since 2017 due to major infrastructure projects enhancing connectivity within Jharkhand and with West Bengal, solidifying the city's role as an industrial hub.
- North Goa rose 27 positions, from 51st in Q4 2024 to 24th in Q1 2025, marking its highest growth levels since 2021; this growth was driven by rising tourism and increased investments in the hospitality sector. Emerging cities are rapidly becoming key economic hubs, supporting major metros and evolving into independent growth centres. Nearly 45% of India's 115,000+ startups originate in non-metro regions, contributing significantly to innovation, industrial expansion, and job creation.
- Sant Kabir Nagar surged 11 ranks to the 16th position, reflecting accelerated economic activity.
- At a pan-India level, the largest improvement in ranking was seen in Baramulla in the state of Jammu and Kashmir. Its ranking moved from 379 to 159, potentially due to railway infrastructure projects.
- The rankings of Jahanabad, Puducherry, and Sahibganj moved from the top 200 to top 100 districts.

City Vitality Index (CVI)

This report highlights the top 100 non-metro districts driving India's economic transformation. Tailored for business leaders, policymakers, and investors, the report offers actionable insights to identify high-growth regions and capitalize on emerging economic opportunities in India's rapidly urbanizing landscape. This report serves as a strategic guide to India's non-metro economic powerhouses, equipping stakeholders with the intelligence needed for informed decision-making and investment in the country's next wave of urban expansion.

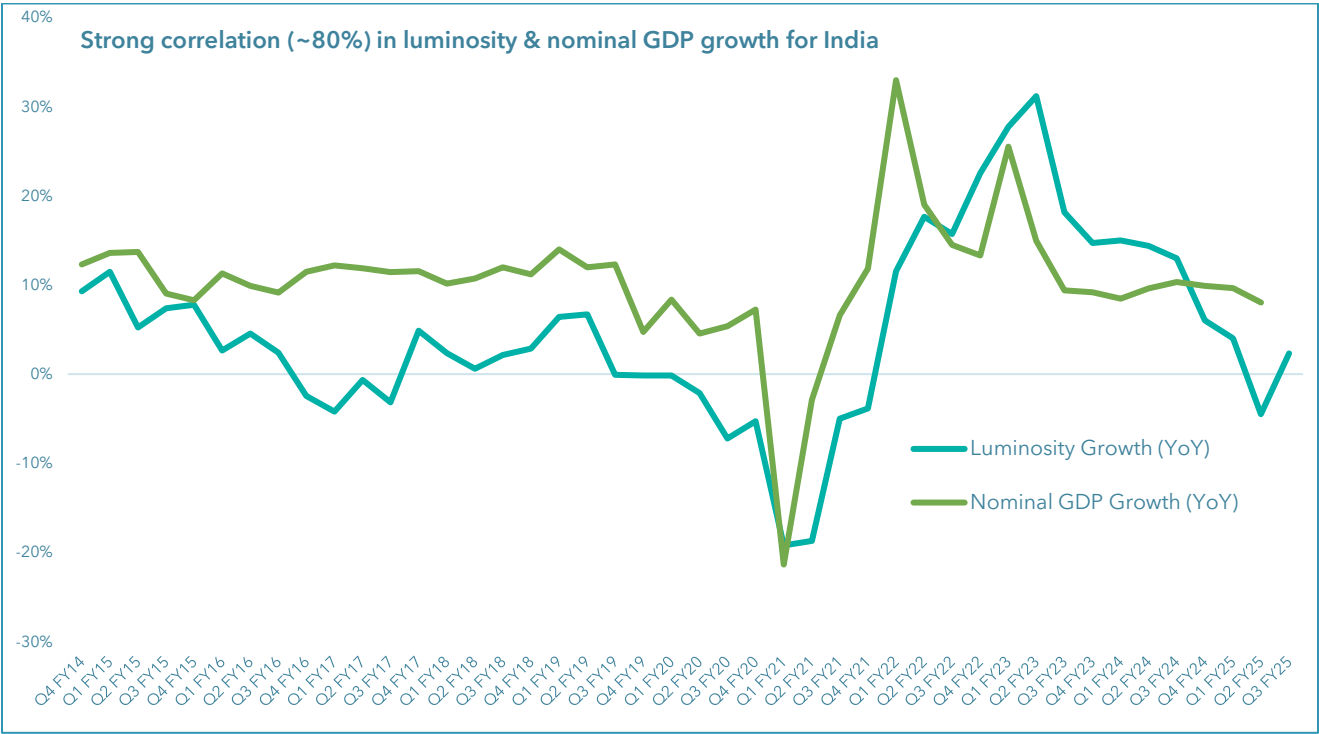
The rankings exclude India's nine largest metro cities, focusing instead on emerging districts. The scoring methodology integrates machine learning algorithms to optimize ranking weights and validate historical economic trends. Statistical corrections mitigate biases due to district size and population density, ensuring robust and reliable rankings.

Mapping Economic Activity With the CVI

As the world's fifth-largest economy, India is on track to becoming a \$5 trillion powerhouse, growing at over 6% annually. With more than 700 districts contributing to this momentum, urban and emerging non-metro hubs are shaping the country's economic future – from manufacturing strongholds to IT innovation centers.

There is a strong correlation (~80%) between luminosity and nominal economic (GDP) growth for India. The CVI provides a data-driven approach to understanding this transformation. By analyzing nightlight satellite imagery, population trends, and macroeconomic indicators, the CVI ranks districts based on economic size and growth momentum.

It highlights emerging hotspots and growth trajectories, offering valuable insights into India's evolving urban and non-metro landscapes. At a district/city level, the correlation goes up to 99%, signaling a strong relationship between luminosity and nominal GDP growth, especially for urban centers.



The CVI tracks 700 districts across India, ranking them based on economic growth and size scores. The index primarily utilizes nightlight satellite data from NASA's Black Marble images, with the Sum of Lights (SoL) serving as a key economic activity indicator.

Methodology

The City Vitality Index (CVI) ranks and evaluates economic activities across all districts in India. The report presents the top 100 cities, excluding 9 metropolitan cities, based on growth and size of economic activity. Satellite Earth Observation (EO) data acts as a proxy for socio-economic conditions. The CVI rankings leverage satellite-derived night-time light data from NASA's Black Marble algorithm product suite as a proxy for economic activity. The dataset provides high-resolution information on the intensity of lights at night, which has been extensively validated as an indicator of economic development. The methodology uses the Sum of Lights (SoL) metric, calculated at the district level, to measure economic activity.

Cities are assessed on two dimensions:

- Economic Size: Total SoL, capturing the magnitude of overall economic activity in a district.
- Economic Growth: Year-on-year and quarter-on-quarter changes in SoL, highlighting the momentum of economic expansion.

To expand the scope of rankings, additional parameters such as geographic area; the Gridded Population of the World, Version 4 (GPWv4) collection (which models the distribution of human population); and statistics related to businesses operating in each district have been infused. These variables are integrated into a composite scoring framework using a combination of statistical and machine learning techniques.

Dimensionality reduction and feature selection methods ensure the final model prioritizes parameters that contribute the most to explaining variance in economic performance.

Machine learning algorithms are deployed to fine-tune the ranking weights by testing correlations between SoL metrics, auxiliary variables, and ground truth indicators of economic activity. Models are validated using historical data to ensure robustness and accuracy. Statistical adjustments, such as normalization and outlier detection, are applied to mitigate biases arising from regional differences in area size and population density. This rigorous methodology creates a dynamic ranking system. These dynamic rankings are updated periodically (monthly and quarterly) to reflect real-time changes, offering a granular view of India's economic landscape beyond the traditional metropolitan hubs. The focus on districts with emerging growth potential ensures that the product captures valuable insights into the evolving economic geography of the country.

Interpretation of CVI

Interpreting the CVI is straightforward; the nightlight intensity graph illustrates the level of economic activity in each region. A rise in nightlight intensity over time is a positive indicator, as it signifies increased economic output. This can reflect longer working hours in service industries, increased factory operations, or enhanced transport activity. It is important to note that nightlight intensity follows seasonal patterns, often peaking during the third quarter of the year, particularly in the run-up to the festive season, when production and consumption levels are typically higher.

The CVI also features a map of transport networks, such as highways, to factor in the significance of infrastructure in driving economic growth. Districts with well-connected

transport networks typically exhibit stronger economic performance, as they facilitate the easy movement of goods, supporting trade and business development.

As India advances toward its 2047 economic goals, the CVI serves as a strategic tool to guide urbanization efforts. By integrating real-time data and advanced analytics, it empowers decision-makers to foster resilient, well-connected, and prosperous cities. The index provides critical insights to optimize infrastructure investments, enhance business ecosystems, and drive targeted development initiatives. With continuous updates and dynamic rankings, the CVI ensures that India's growth trajectory remains data-driven and sustainable, unlocking new opportunities for economic expansion across emerging urban centres.

Metro Cities (Class X Cities)

Metro cities are the economic engines of India, driving growth across industries with their superior infrastructure, skilled workforce, and high consumer spending. These cities host major financial hubs, corporate headquarters, and thriving startup ecosystems, attracting global investment and fostering innovation. Strong transport networks – including international airports, metro rail systems, and highways – enhance business mobility and logistics, making metros ideal for expansion. Additionally, a dense, affluent consumer base supports demand for premium goods and services, fueling market growth. With top universities and research institutions, metros also serve as talent magnets, supplying businesses with a highly skilled workforce.

India's overall urban areas account for only 3% of the country's total land but contribute significantly to GDP. These metro cities also are some of the largest sources of tax collections due to the higher level of economic activity. These cities also house some of the largest economic zones that are responsible for manufacturing and generating export revenue and serve as attractive spots for investment in commercial spaces and residential areas. Pune, for example, has 23 Special Economic Zones and is responsible for exports worth ~\$11.69 billion. These cities also attract the highest amount of FDI due to thriving services and manufacturing sectors. Mumbai remains the top choice for investment in office spaces.

Refer to [Appendix](#) on how to infer information provided in the tables & charts

Pune, MH

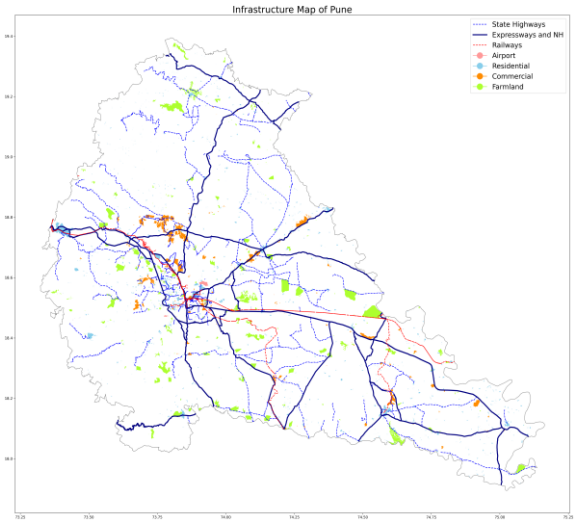
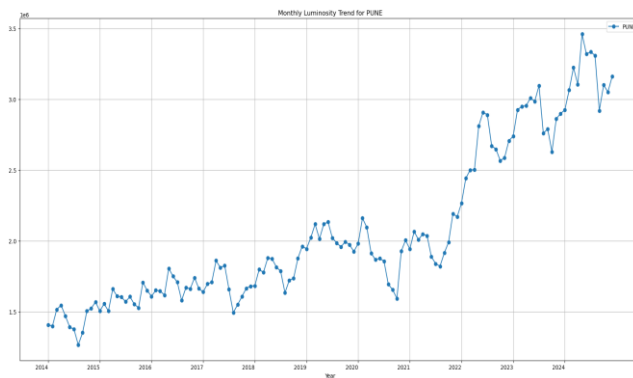
Overall Rank: 1 (↔) Growth Rank: 1 Size Rank: 4

Pune, a fast-growing city in Maharashtra, is a major IT hub and is known as the "Oxford of the East" with 811 colleges; it boasts a highly educated workforce. Ranked globally for quality of living, it is a vibrant business center, driving innovation and governance.

Population: 9.4 mn

Land Area: 15,643 Sq. KM

Exported Product	Annual Value (in Cr)	Major Economic Clusters	Main Product
Auto Components	10,316	Automotive, IT and Educational	Sugarcane



Udyam Registrations	Count
Micro	610,041
Small	9,929
Medium	887
Total	620,857

Mumbai, MH

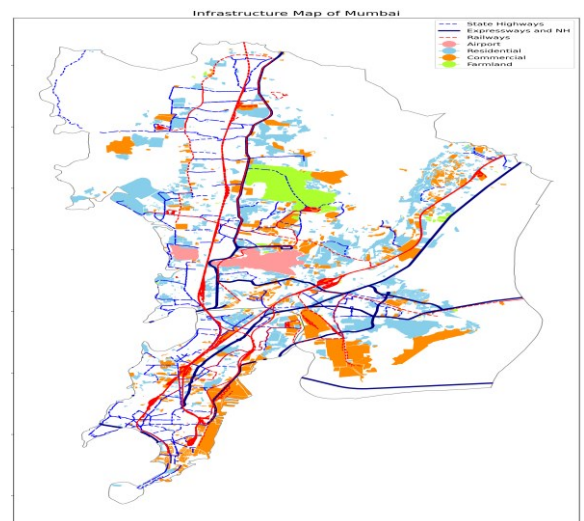
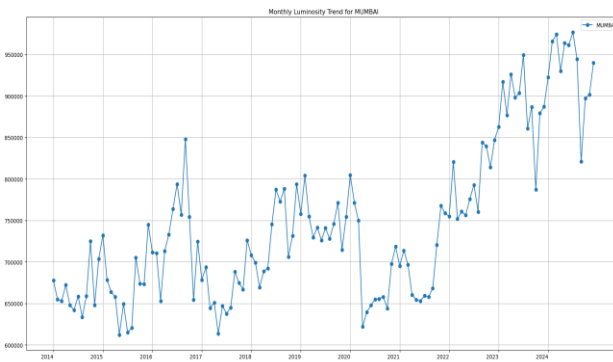
Overall Rank: 2 (↔) Growth Rank: 2 Size Rank: 1

Mumbai is known as the "Financial Capital of India". It contributes to ~70% of maritime trade in India due to presence of a vast coastline. The city contributes ~33% of income tax collections in the country. It is also known for the export of gems and jewelry, electronics, and hardware products.

Population: 12.4 mn

Land Area: 429.5 Sq. KM

Exported Product	Annual Value (in Cr)	Major Economic Clusters	Main Product
Pearls, Stones and Metals, Gems and Jewelry	37,460	Shipping, IT, and Entertainment	Rice



Udyam Registrations	Count
Micro	525,128
Small	19,016
Medium	2,879
Total	547,023

Bengaluru, KN

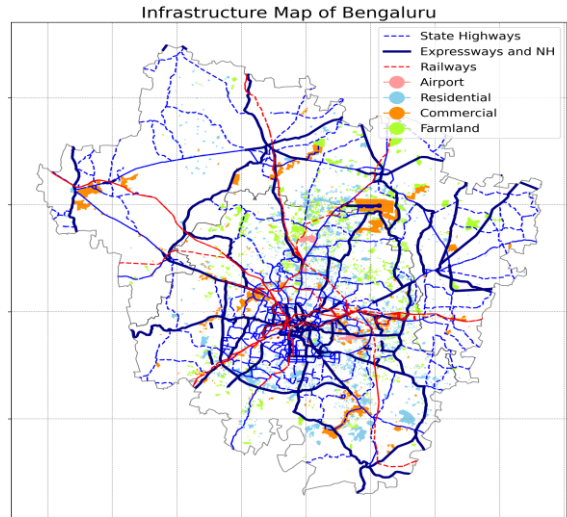
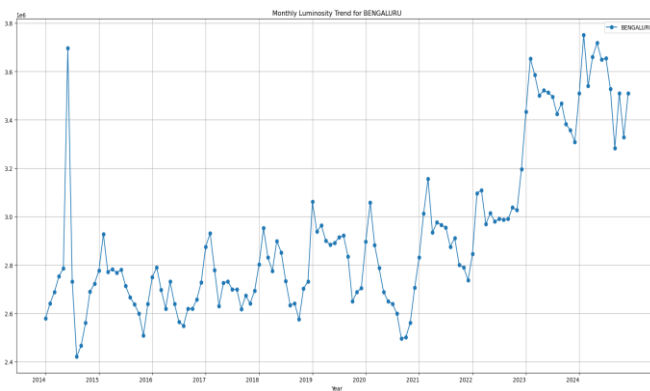
Overall Rank: 3 (↔) **Growth Rank: 6** **Size Rank: 2**

Known as the "Silicon Valley of India," Bengaluru is a leading IT hub, hosting many global tech giants. The city also boasts a vibrant culture and is a popular destination for young professionals.

Population: 10.6 mn

Land Area: 4,537 Sq. KM

Exported Product	Annual Value (in Cr)	Major Economic Clusters	Main Product
Airplane Parts	1,834	IT, Aerospace and R&D	Coffee
Auto Components	2,802		



Udyam Registrations	Count
Micro	405,441
Small	14,017
Medium	1,581
Total	421,039

Chennai, TN

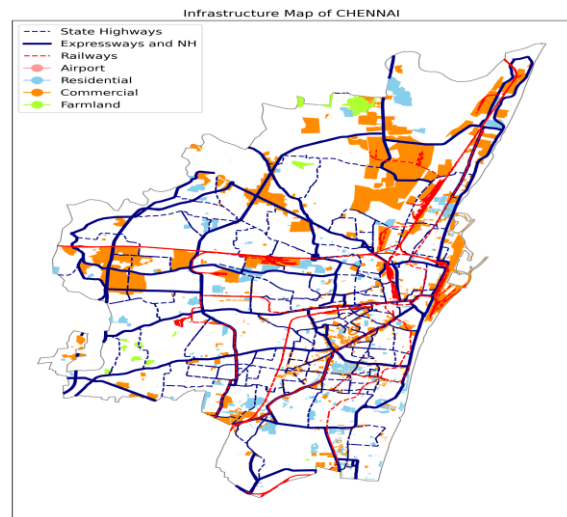
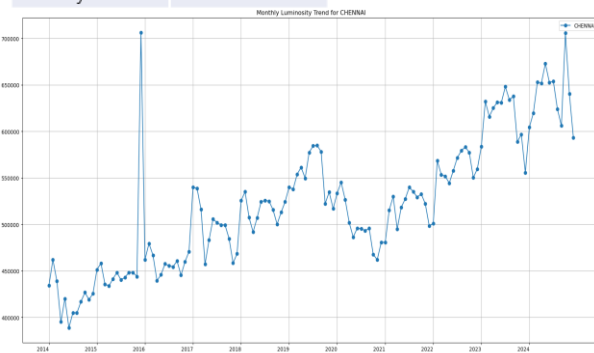
Overall Rank: 4 (2 ↑) **Growth Rank: 3** **Size Rank: 5**

Chennai is a cultural and economic powerhouse in South India, renowned for its automobile industry, IT parks, and medical institutions. The city also has a rich cultural with historical heritage.

Population: 6.7 mn

Land Area: 204.7 Sq. KM

Exported Product	Annual Value (in Cr)	Major Economic Clusters	Main Product
Minerals And Fuels	6,937	Automotive, IT, and Logistics	Pulses
Pearls, Stones and Metals, Gems and Jewelry	3,720		



Udyam Registrations	Count
Micro	268,824
Small	8,889
Medium	1,027
Total	278,740

Ahmadabad, GJ

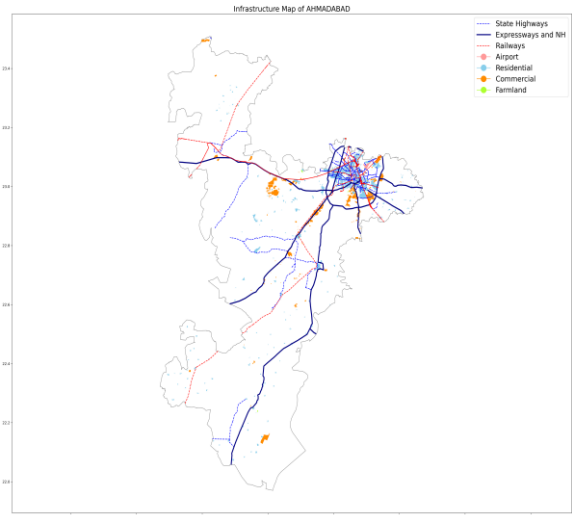
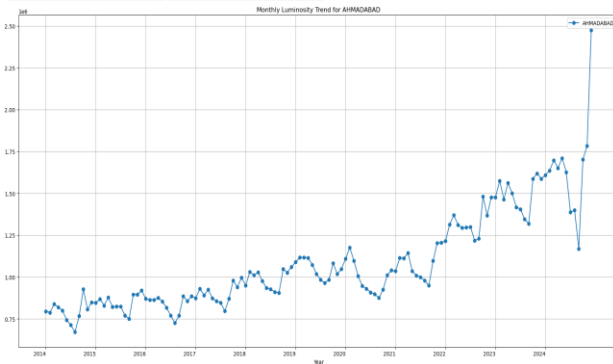
Overall Rank: 5 (1 ↓) Growth Rank: 4 Size Rank: 8

The largest city in Gujarat, it is well known for having developed infrastructure and business environment conducive for development of service and manufacturing industries. It has special economic zones in textiles,

Population: 7.5 mn

Land Area: 7,984.2 Sq. KM

Exported Product	Annual Value (in Cr)	Major Economic Clusters	Main Product
Organic Chemicals/Pharmaceutical Products	6,197	Textile, Pharmaceutical and Jewelry	Groundnuts
Auto Components	3,760		



Udyam Registrations	Count
Micro	268,824
Small	8,889
Medium	1,027
Total	278,740

Hyderabad, TS

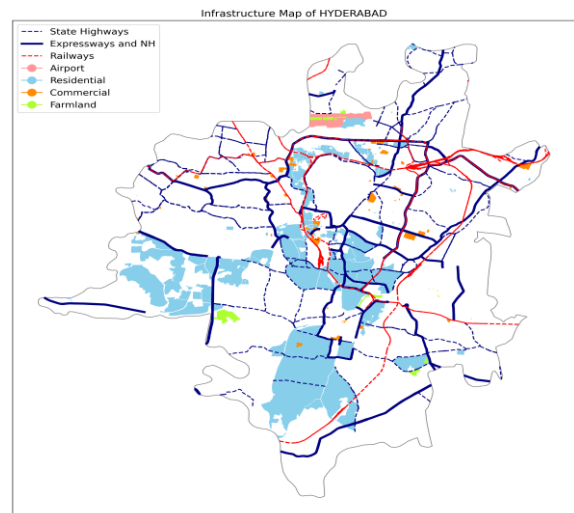
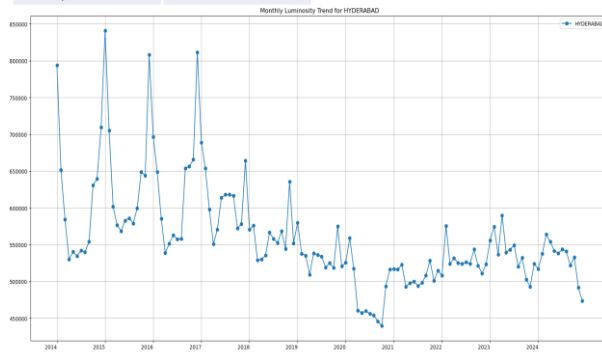
Overall Rank: 6 (2 ↑) Growth Rank: 5 Size Rank: 7

It is known as the "Cybercity of India" and houses apparel exports parks and export promotion zones. The city has MSMEs involved in manufacturing of 21 different industrial and non-industrial products along with services.

Population: 3.9 mn

Land Area: 232.3 Sq. KM

Exported Product	Annual Value (in Cr)	Major Economic Clusters	Main Product
Pearls, Stones and Metals, Gems and Jewelry	806	IT and Pharmaceutical	Cotton
Auto Components	1,010		



Udyam Registrations	Count
Micro	154,867
Small	7,110
Medium	976
Total	162,953

Kolkata, WB

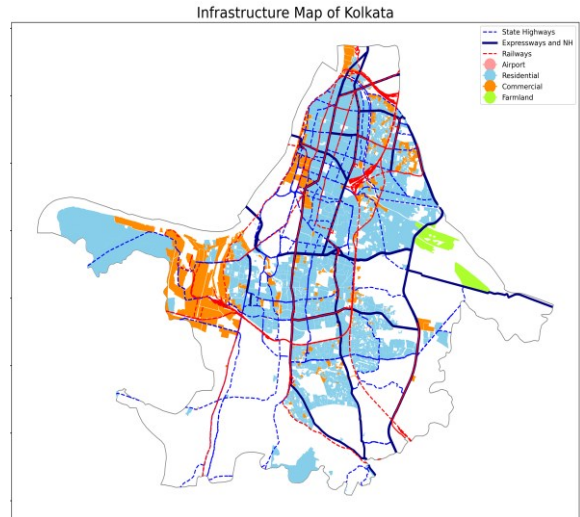
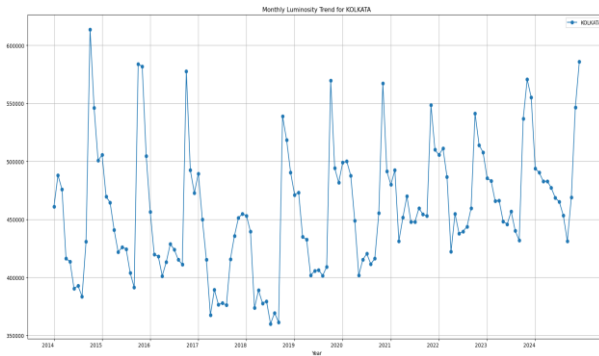
Overall Rank: 7 (2 ↓) **Growth Rank: 7** **Size Rank: 6**

India's cultural capital, Kolkata is known for its jute. It is the financial and commercial hub for eastern India. The city is also famous for UNESCO recognized Durga puja.

Population: 4.4 mn

Land Area: 189.9 Sq. KM

Exported Product	Annual Value (in Cr)	Major Economic Clusters	Main Product
Iron And Steel	1,553	Oil, Trade and Financial Services	Rice



Udyam Registrations	Count
Micro	91,440
Small	7,430
Medium	1,024
Total	99,894

Delhi, DL

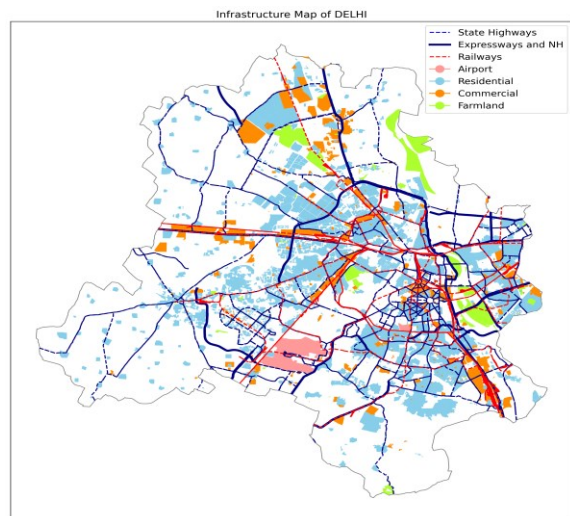
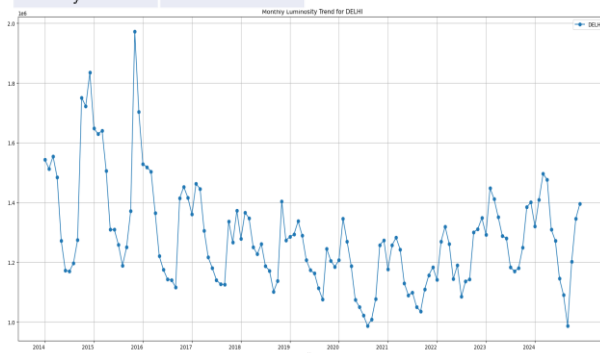
Overall Rank: 8 (1 ↓) **Growth Rank: 8** **Size Rank: 3**

India's capital city, Delhi is a political, business, and cultural center with a rich history, from ancient monuments like the Red Fort to modern infrastructure. It is home to government institutions and major corporations.

Population: 9.6 mn

Land Area: 503.1 Sq. KM

Exported Product	Annual Value (in Cr)	Major Economic Clusters	Main Product
Auto Components	1,737	Government and Public Sectors, IT	Wheat
Pearls, Stones and Metals, Gems and Jewelry	6,112		



Udyam Registrations	Count
Micro	512,099
Small	24,933
Medium	3,047
Total	540,079

Emerging Cities (Non-metro)

All the cities other than major metropolitan cities are considered emerging cities (700+). In this report, the top 100 cities in terms of their CVI ranks have been classified as emerging cities. These cities serve as satellite cities - support metro cities but are independent socially and economically - for the main metro cities. They are also a hub for entrepreneurial talent, with 45% of the country's start-ups emerging in these cities.

For Q1 2025, the top-ranked emerging city is Thane, having improved its ranking on account of better growth. Some cities have seen a major jump in their ranking due to the change in growth and size ranks. Sant Kabir Nagar jumped 11 ranks to the 16th position. A significant movement in ranks has been observed for cities such as Jaipur, which fell 11 ranks, and North Goa, which jumped 27 positions, from 51 in Q4 2024. Ranipet saw a jump of 11 ranks from its position in Q4. The ranks change based on a city's size and growth ranks, which are mentioned in individual city profiles.

In this report, we have identified the top 25 non-metro cities that are shaping India's economic narrative with their impressive performance across key economic parameters. These cities have been meticulously ranked based on their economic size, growth momentum, and overall vitality, providing a comprehensive view of their standing in the current quarter.

Through a detailed analysis of trends in economic activity growth, this section unpacks the underlying factors driving their rankings. From industrial expansion to infrastructure development, each city tells a unique story of progress. Alongside the rankings, we delve into the major economic indicators that define their dynamism, offering insights into their evolving economic landscapes. This ranking is not just a snapshot but a reflection of the robust and sustained efforts contributing to their economic ascent.

Thane, MH

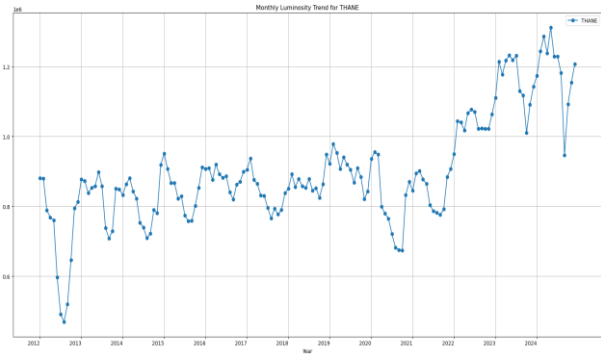
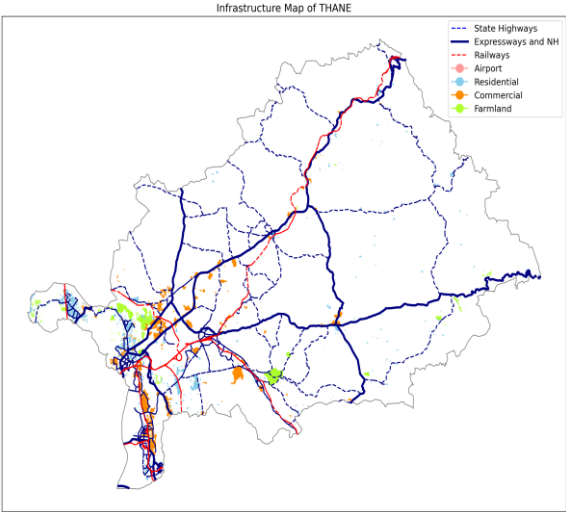
Overall Rank: 1 (1 ↑) **Growth Rank: 203** **Size Rank: 1**

Thane is known for urbanization, business hubs, and proximity to Mumbai. It has natural beauty with lakes and forests, making it a residential hub.

Population: 11.1 mn

Land Area: 4,214 Sq. KM

Exported Product	Annual Value (in Cr)	Major Economic Clusters	Main Product
Iron & Steel	2,239	Textiles, Chemicals, Automobiles, IT.	Mango (Alphonso)
Organic Chemicals/ Pharmaceutical Products	1,624		



Udyam Registrations	Count
Micro	422,654
Small	7,249
Medium	674
Total	430,577

Kanchipuram, TN

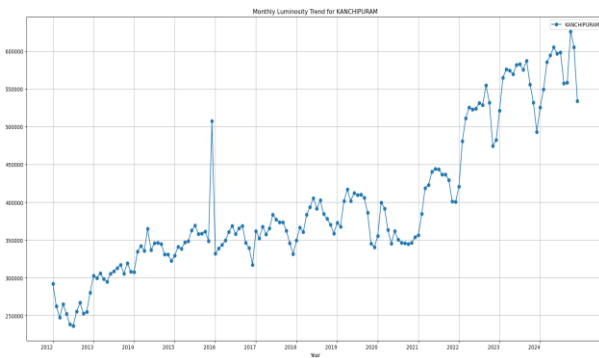
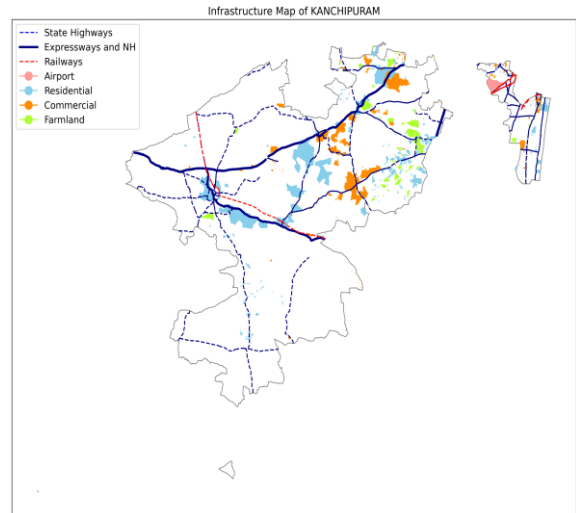
Overall Rank: 2 (12 ↑) **Growth Rank: 105** **Size Rank: 3**

It is known for silk weaving industry, particularly Kanchipuram sarees. The city is home to ancient temples such as the Kailasanathar Temple and Varadaraja Perumal Temple.

Population: 4.0 mn

Land Area: 1,684 Sq. KM

Exported Product	Annual Value (in Cr)	Major Economic Clusters	Main Product
Auto Components	45,590	Textile, Silk Weaving	Kanchipuram Silk



Udyam Registrations	Count
Micro	74,715
Small	1,225
Medium	123
Total	76,063

Dhanbad, JH

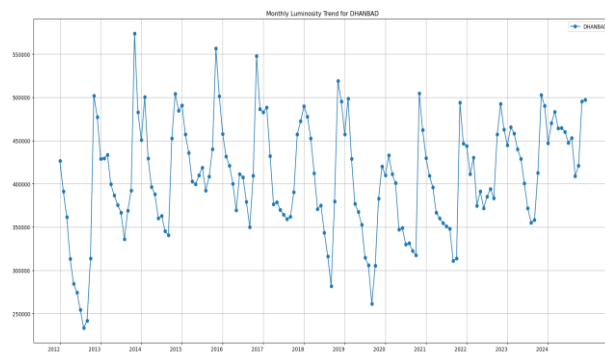
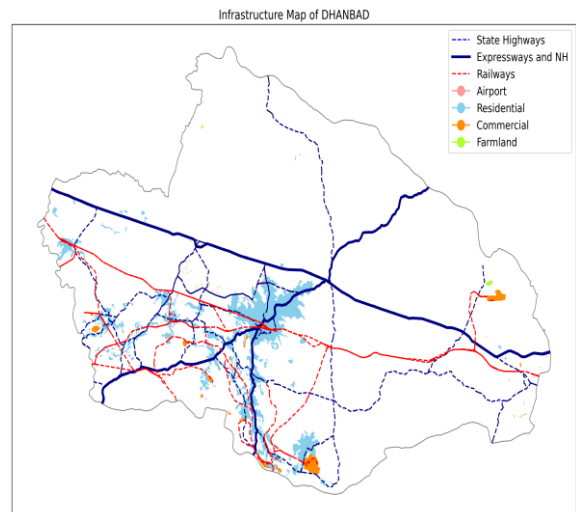
Overall Rank: 3 (7 ↑) **Growth Rank: 14** **Size Rank: 15**

Dhanbad is known as the "Coal Capital of India" due to its abundant coal reserves and numerous coal mines, as well as educational institutions such as the Indian School of Mines.

Population: 2.7 mn

Land Area: 2,886 Sq. KM

Exported Product	Annual Value (in Cr)	Major Economic Clusters	Main Product
Petroleum & Coal Products	8	Coal Mining, Steel Production	Coal



Udyam Registrations	Count
Micro	45,192
Small	813
Medium	49
Total	46,054

Paschim Bardhaman, WB

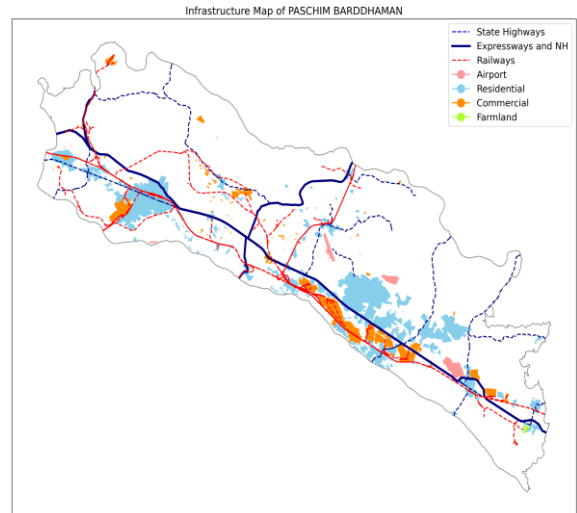
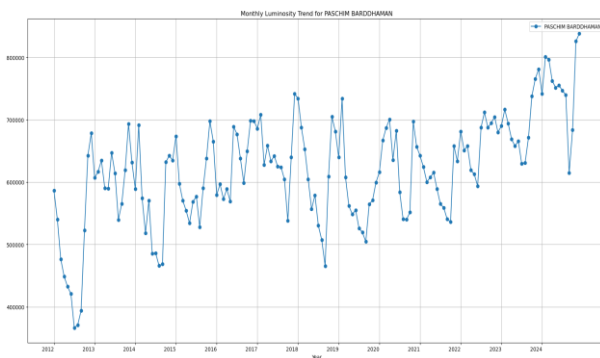
Overall Rank: 4 (3 ↓) Growth Rank: 113 Size Rank: 5

Paschim Bardhaman is known for its coal mining and industrial and agricultural significance.

Population: 4.0 mn

Land Area: 1,603 Sq. KM

Exported Product	Annual Value (in Cr)	Major Economic Clusters	Main Product
Iron & Steel	3,462	Coal Mining, Steel Industries, Agriculture	Sona Masoori Rice



Udyam Registrations	Count
Micro	39,477
Small	1,210
Medium	79
Total	40,766

Ghaziabad, UP

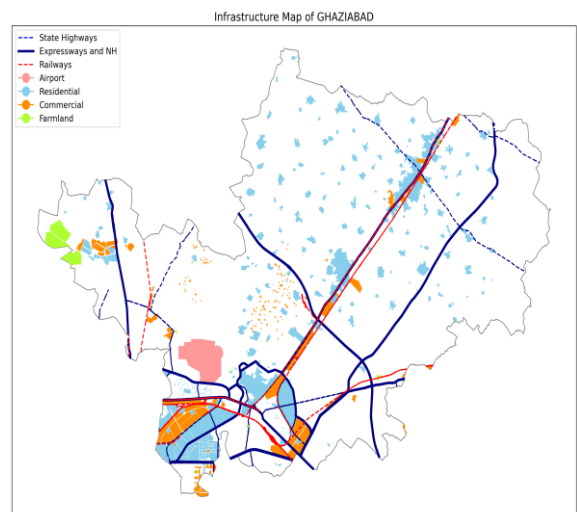
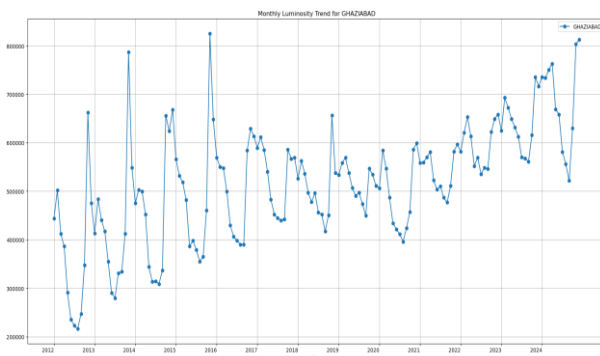
Overall Rank: 5 (3 ↑) Growth Rank: 168 Size Rank: 2

It is known for its diverse range of industries including manufacturing, engineering, electronics, textiles, and food processing.

Population: 6.3 mn

Land Area: 1,034 Sq. KM

Exported Product	Annual Value (in Cr)	Major Economic Clusters	Main Product
Iron & Steel	816	Engineering Goods, Manufacturing	Guava



Udyam Registrations	Count
Micro	106,375
Small	2,671
Medium	265
Total	109,311

Varanasi, UP

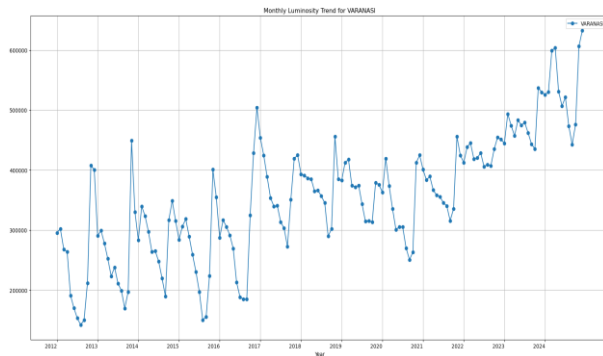
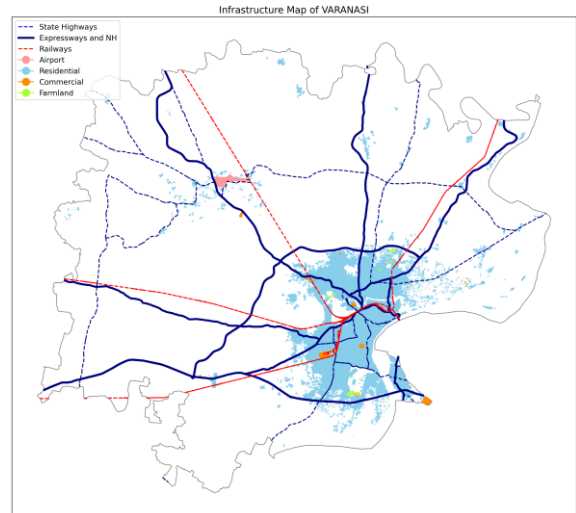
Overall Rank: 6 (5 ↑) **Growth Rank: 47** **Size Rank: 10**

Varanasi (Benares or Kashi) is one of the oldest living City and most culturally significant cities in India and is situated on the banks of the Ganges River.

Population: 4.2 mn

Land Area: 1,530 Sq. KM

Exported Product	Annual Value (in Cr)	Major Economic Clusters	Main Product
Carpets & Other Textile	102	Culture, Education, Handicrafts	Peda, Banarasi Sarees



Udyam Registrations	Count
Micro	68,709
Small	1,745
Medium	125
Total	70,579

Haora, WB

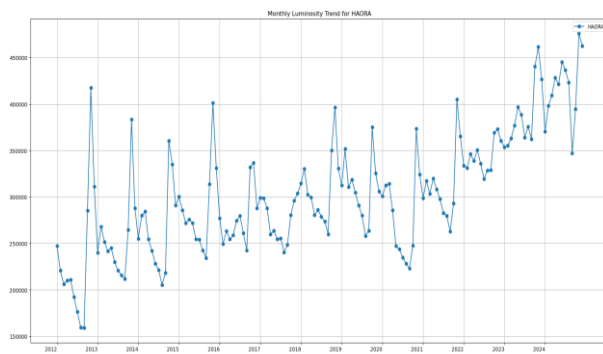
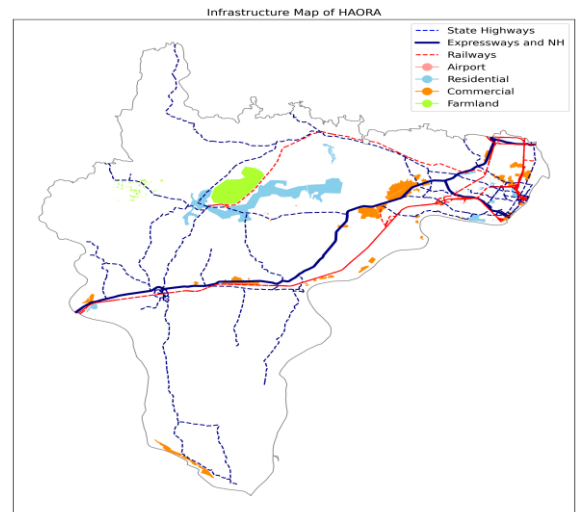
Overall Rank: 7 (4 ↓) **Growth Rank: 130** **Size Rank: 6**

A major industrial and commercial hub, Howrah is known for railway manufacturing, jute mills, and agriculture.

Population: 5.4 mn

Land Area: 1,467 Sq. KM

Exported Product	Annual Value (in Cr)	Major Economic Clusters	Main Product
Iron & Steel	2,032	Engineering, Railway Production	Jute



Udyam Registrations	Count
Micro	50,489
Small	1,478
Medium	87
Total	52,054

Gautam Buddha Nagar, UP

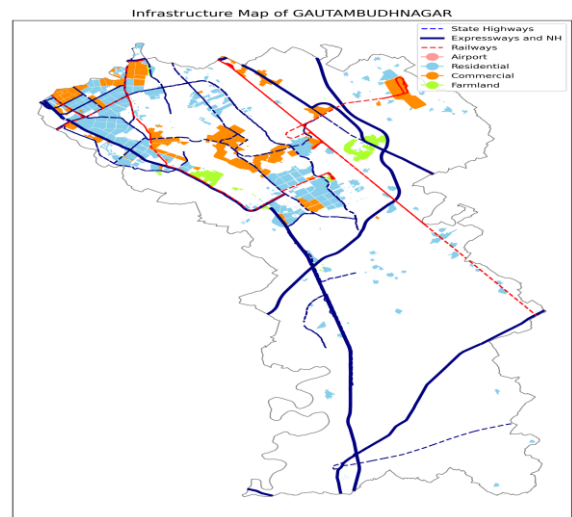
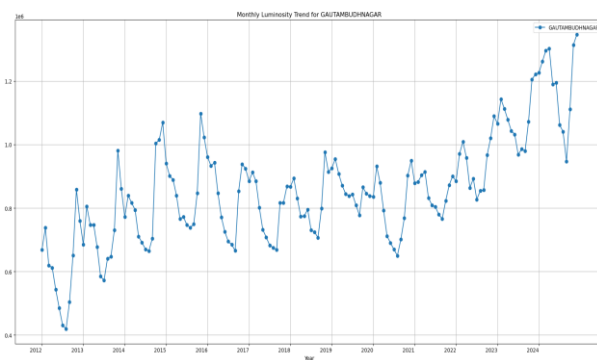
Overall Rank: 8 (4 ↓) Growth Rank: 79 Size Rank: 9

The district is part of the National Capital Region (NCR), with major urban centers like Noida and Greater Noida, known for their industrial, commercial, and IT developments.

Population: 2.3 mn

Land Area: 1,442 Sq. KM

Exported Product	Annual Value (in Cr)	Major Economic Clusters	Main Product
Auto Components	2,313	IT, Real Estate, E-commerce	Wheat
Apparel And Clothing	3,175		



Udyam Registrations	Count
Micro	100,700
Small	2,746
Medium	289
Total	103,735

Gurugram, HR

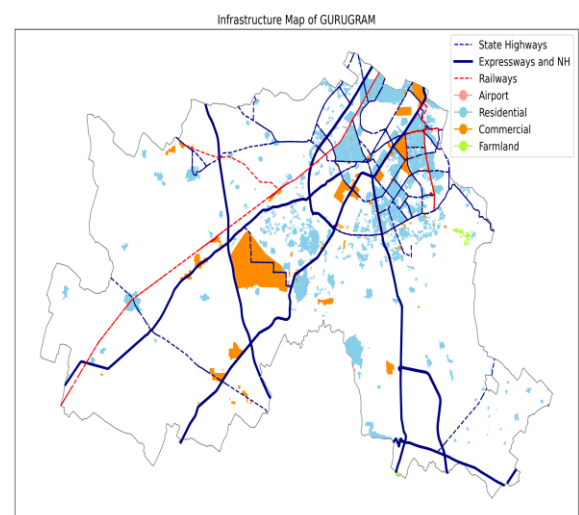
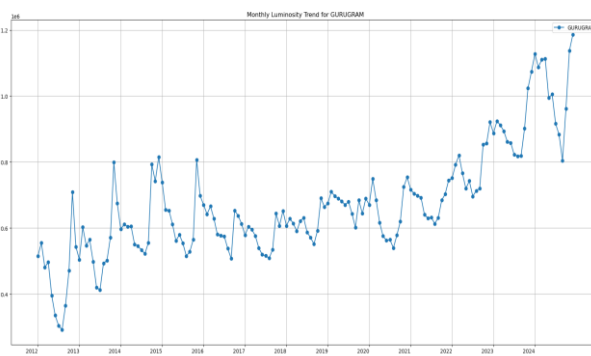
Overall Rank: 9 (4 ↓) Growth Rank: 45 Size Rank: 13

It is known for its booming IT and corporate sectors, as well as luxury real estate. The district has modern infrastructure, shopping malls, and is also home to various MNCs.

Population: 2.5 mn

Land Area: 1,258 Sq. KM

Exported Product	Annual Value (in Cr)	Major Economic Clusters	Main Product
Auto Components	4,351	IT, BPO, Business Services	Cotton, Mustard Oil



Udyam Registrations	Count
Micro	96,006
Small	4,232
Medium	514
Total	100,752

Moradabad, UP

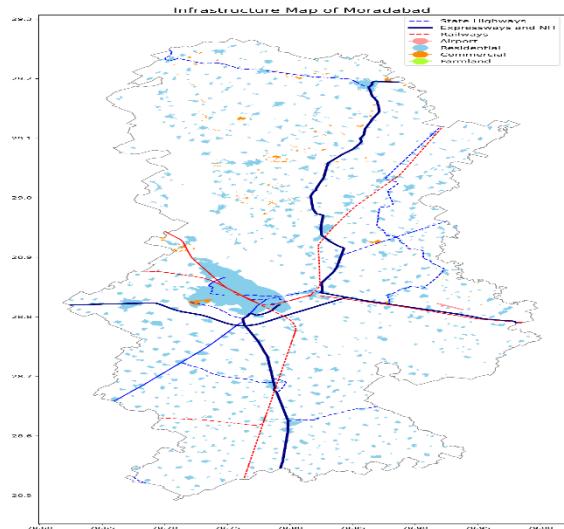
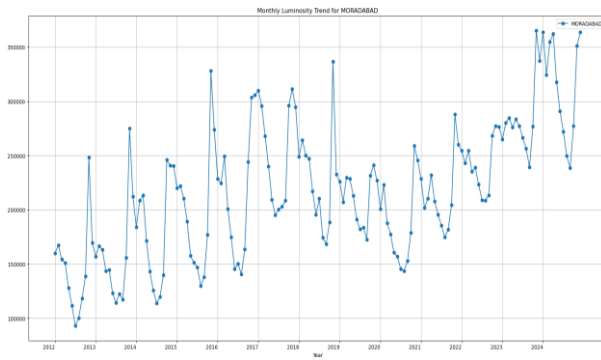
Overall Rank: 10 (1 ↓) Growth Rank: 209 Size Rank: 7

It is known for its historical significance, vibrant culture, and being a major industrial and economic hub, especially in the brassware manufacturing industry.

Population: 5.8 mn

Land Area: 10,863 Sq. KM

Exported Product	Annual Value (in Cr)	Major Economic Clusters	Main Product
Aluminium	1,393	Brassware, Handicrafts, Engineering.	Brass
Iron & Steel	2,176		



Udyam Registrations	Count
Micro	36,743
Small	679
Medium	34
Total	37,456

North 24 Parganas, WB

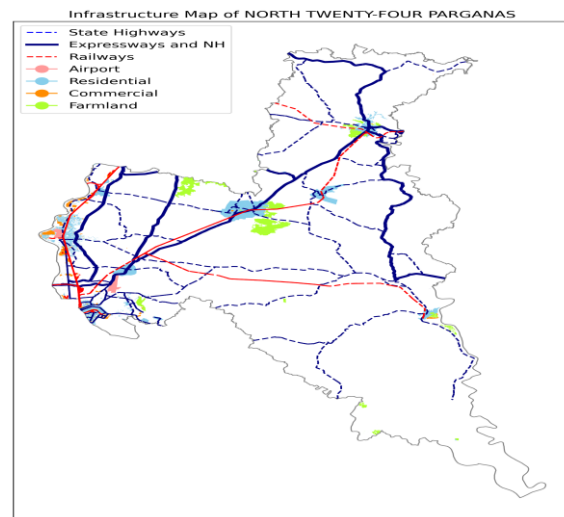
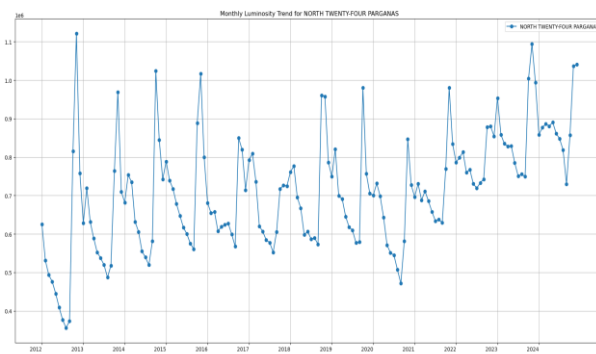
Overall Rank: 11 (5 ↓) Growth Rank: 259 Size Rank: 4

It is an industrial district located along the Hooghly River. The district is known for its agriculture, particularly rice, jute, and vegetables.

Population: 10.9 mn

Land Area: 4,094 Sq. KM

Exported Product	Annual Value (in Cr)	Major Economic Clusters	Main Product
Organic Chemicals/ Pharmaceutical Products	651	IT, Chemical Production	Sundarban Honey, Tigerprawn
Plastic, Rubber, Leather Goods	323		



Udyam Registrations	Count
Micro	58,015
Small	652
Medium	38
Total	58,705

Mau, UP

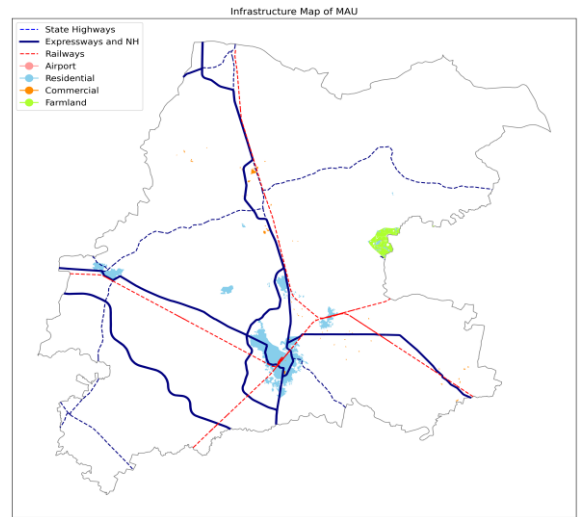
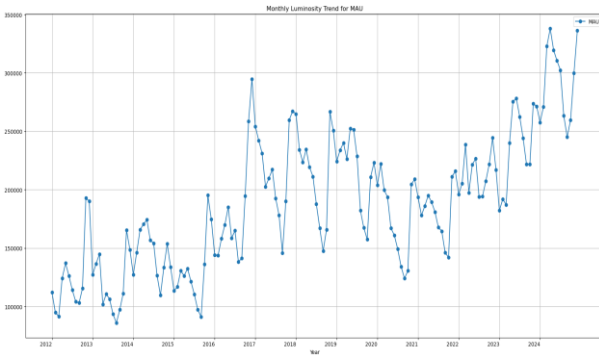
Overall Rank: 12 (4 ↑) Growth Rank: 10 Size Rank: 27

Mau is known for its fertile agricultural land, with major crops being rice, sugarcane, wheat, and pulses. It has a rich cultural heritage, with significant handicrafts and textile industries.

Population: 2.5 mn

Land Area: 1,713 Sq. KM

Exported Product	Annual Value (in Cr)	Major Economic Clusters	Main Product
Agricultural Products	2	Agriculture (Wheat, Rice)	Rice
Polyester & Manmade Fabrics	2		



Udyam Registrations	Count
Micro	20,321
Small	255
Medium	6
Total	20,582

Vellore, TN

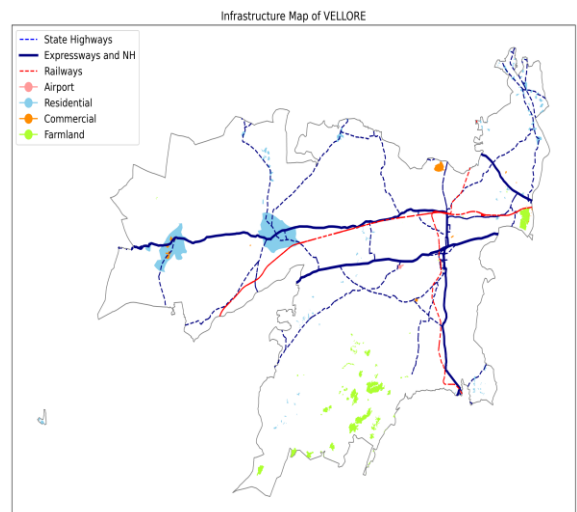
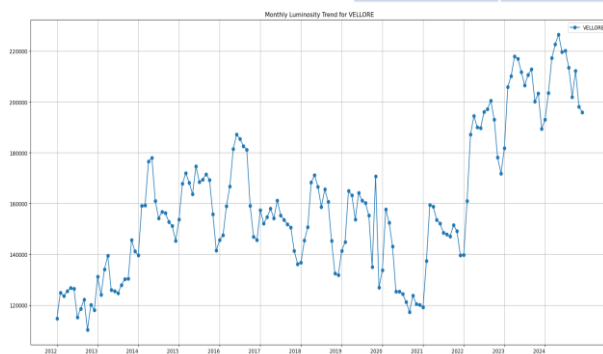
Overall Rank: 13 (6 ↑) Growth Rank: 165 Size Rank: 8

Vellore is known for the Christian Medical College (CMC) and its textile industry. The district is also famous for its agriculture, including pulses, groundnuts, and coconuts.

Population: 4.3 mn

Land Area: 6,062 Sq. KM

Exported Product	Annual Value (in Cr)	Major Economic Clusters	Main Product
Footwear Products	772	Education, Leather Industry, Healthcare	Leather



Udyam Registrations	Count
Micro	58,015
Small	652
Medium	38
Total	58,705

Kaushambi, UP

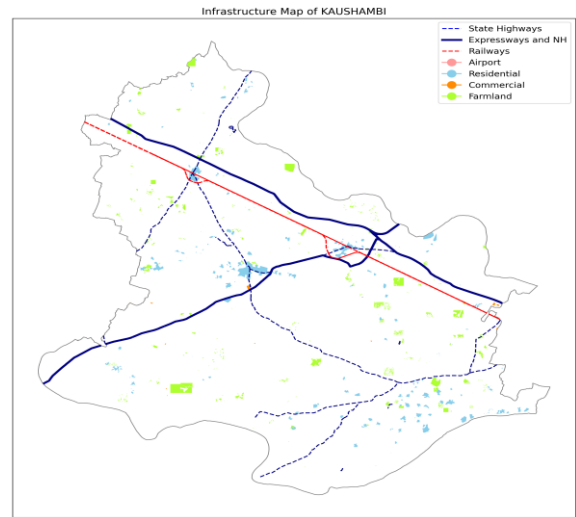
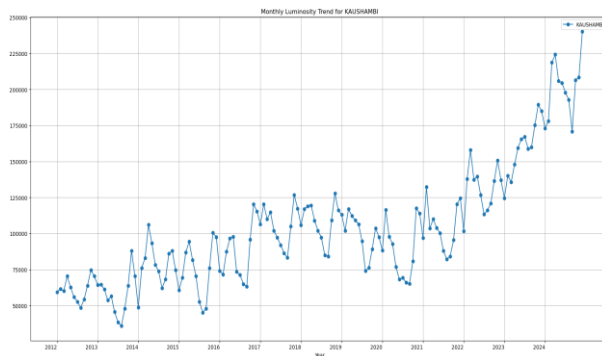
Overall Rank: 14 (2 ↓) Growth Rank: 4 Size Rank: 45

It is known for its historical significance, particularly related to ancient Indian history, and is an important agricultural region.

Population: 1.9 mn

Land Area: 1,780 Sq. KM

Exported Product	Annual Value (in Cr)	Major Economic Clusters	Main Product
Agricultural Products	1	Industry, Agriculture	Mangoes



Udyam Registrations	Count
Micro	10,020
Small	140
Medium	3
Total	10,163

Surat, GJ

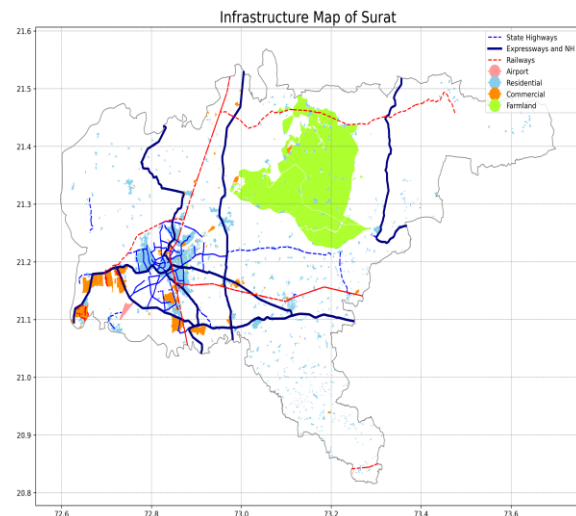
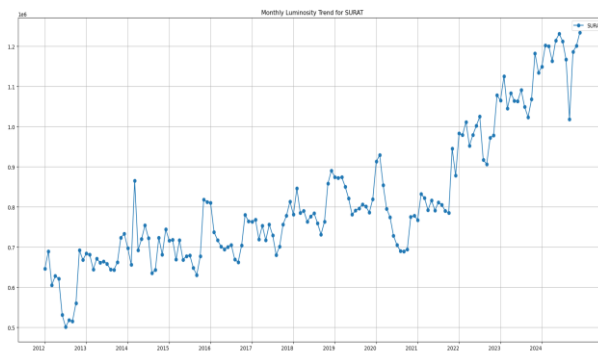
Overall Rank: 15 (↔) Growth Rank: 40 Size Rank: 23

Surat is a major economic hub in Gujarat, known for its diamond cutting, textile manufacturing, and chemical industries. This city is also growing in IT, logistics, and petrochemical sectors.

Population: 8.2 mn

Land Area: 7,657 Sq. KM

Exported Product	Annual Value (in Cr)	Major Economic Clusters	Main Product
Jewelry & Gemstones	69,398	Textile, Diamond cutting and polishing, Logistics	Textile, Diamond Polishing



Udyam Registrations	Count
Micro	10,020
Small	140
Medium	3
Total	10,163

Sant Kabir Nagar, UP

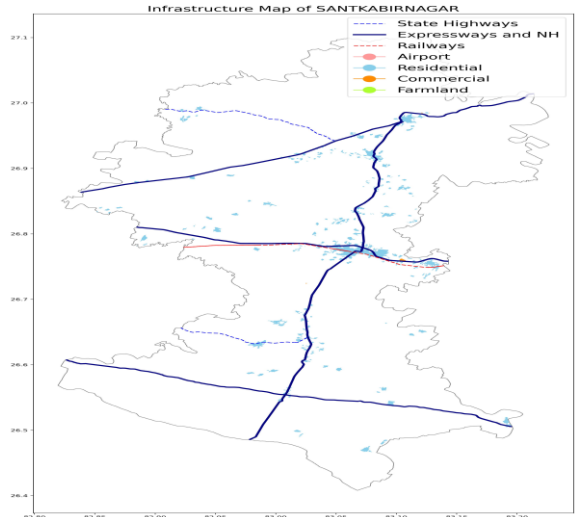
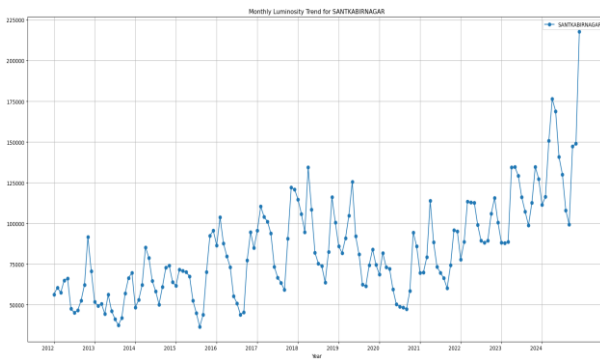
Overall Rank: 16 (11 ↑) Growth Rank: 8 Size Rank: 58

It is known for its cultural heritage as the birthplace of saint Kabir, with opportunities in religious tourism, agriculture, eco-tourism, and local handicrafts, driving economic growth and rural development.

Population: 2.0 mn

Land Area: 1,646 Sq. KM

Exported Product	Annual Value (in Cr)	Major Economic Clusters	Main Product
Organic Chemicals/ Pharmaceutical Products	136	Food Processing and Artisanal Cluster	Desi Wheat



Udyam Registrations	Count
Micro	14,344
Small	181
Medium	7
Total	14,532

Gandhinagar, GJ

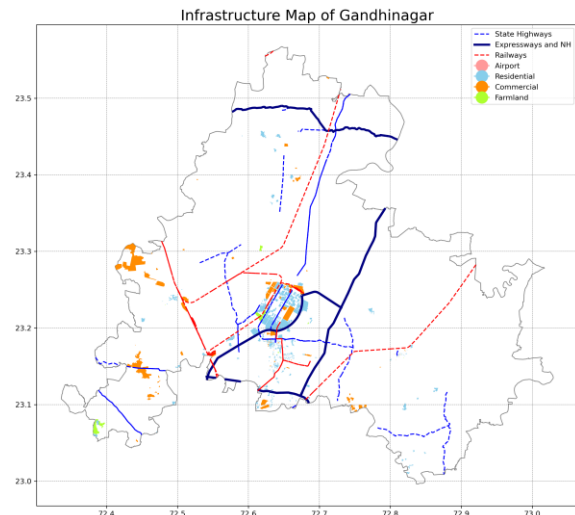
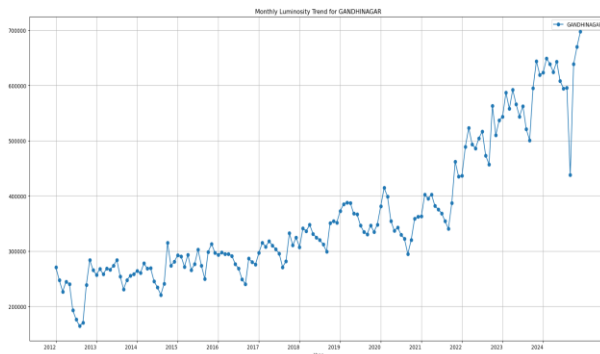
Overall Rank: 17 (1 ↑) Growth Rank: 88 Size Rank: 20

Gandhinagar is known for its modern infrastructure, government institutions, and green spaces.

Population: 1.5 mn

Land Area: 2,140 Sq. KM

Exported Product	Annual Value (in Cr)	Major Economic Clusters	Main Product
Iron & Steel	630	Administration, IT	Salt (produced in coastal areas)
Plastic, Rubber, Leather Goods	489		



Udyam Registrations	Count
Micro	35,527
Small	720
Medium	50
Total	36,297

Jaipur, RJ

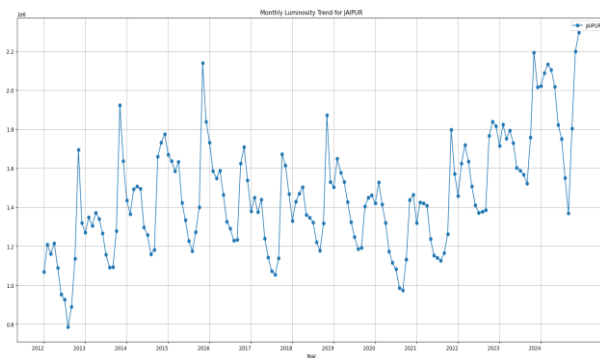
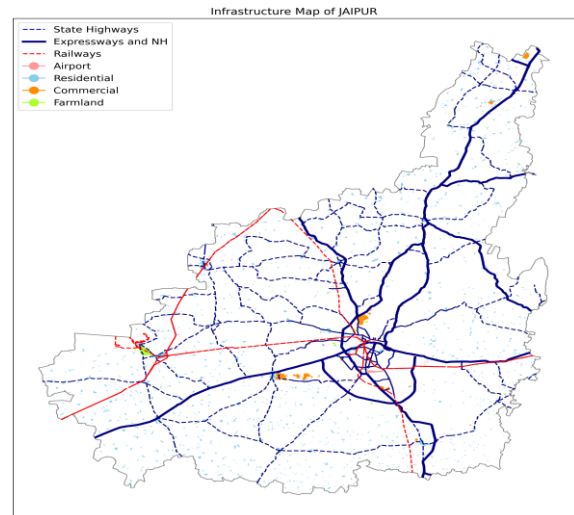
Overall Rank: 18 (11 ↓) **Growth Rank: 186** **Size Rank: 17**

Jaipur is known for its historic palaces and forts, such as Amber Fort and Hawa Mahal. The district is a commercial hub, with a strong presence of the tourism industry and handicrafts like gemstones and textiles.

Population: 8.1 mn

Land Area: 11,143 Sq. KM

Exported Product	Annual Value (in Cr)	Major Economic Clusters	Main Product
Jewelry & Gemstones	3,778	Handicrafts, Jewelry, Textiles, IT	Blue Pottery



Udyam Registrations	Count
Micro	282,491
Small	5,870
Medium	569
Total	288,930

Medchal-Malkajgiri, TS

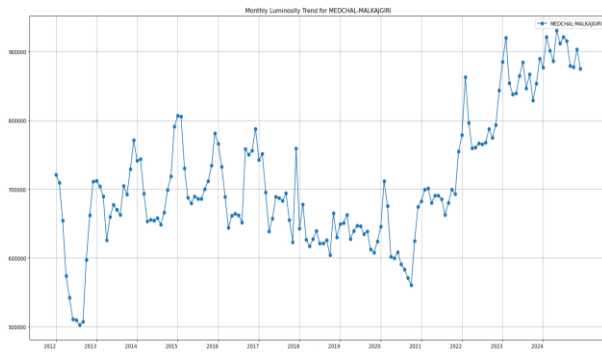
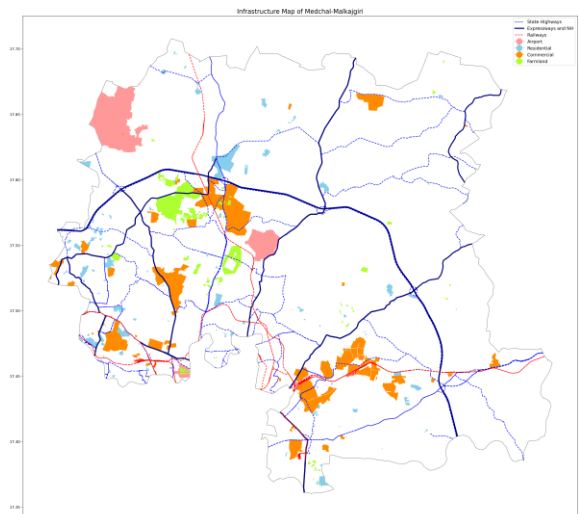
Overall Rank: 19 (3 ↑) **Growth Rank: 72** **Size Rank: 25**

The district is a center for industry, commerce, and housing developments. It also has several historical and religious sites.

Population: 8.9 mn

Land Area: 1,084 Sq. KM

Exported Product	Annual Value (in Cr)	Major Economic Clusters	Main Product
Organic Chemicals/ Pharmaceutical Products	1,772	Manufacturing, IT	Rice



Udyam Registrations	Count
Micro	76,439
Small	1,823
Medium	151
Total	78,413

Ranipet, TN

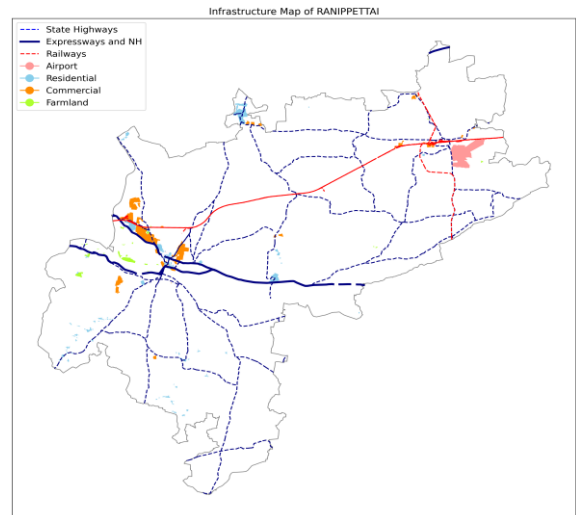
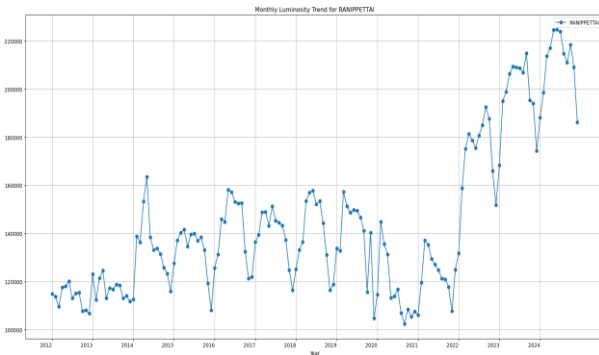
Overall Rank: 20 (16 ↑) Growth Rank: 61 Size Rank: 29

The district is known for its industrial landscape, with a strong presence in engineering, leather, and textile industries. The region is also well-connected to major cities like Chennai, enhancing its trade and economic potential.

Population: 2.2 mn

Land Area: 2,234 Sq. KM

Major Economic Clusters	Main Product
Engineering and Auto Parts Cluster	Leather Goods



Udyam Registrations	Count
Micro	25,038
Small	162
Medium	3
Total	25,203

Karimnagar, TS

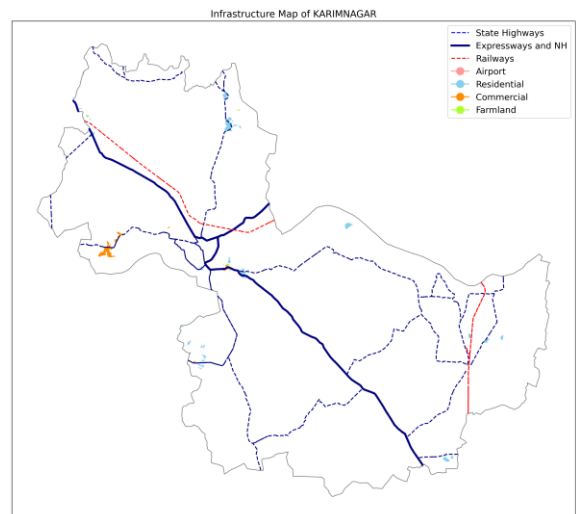
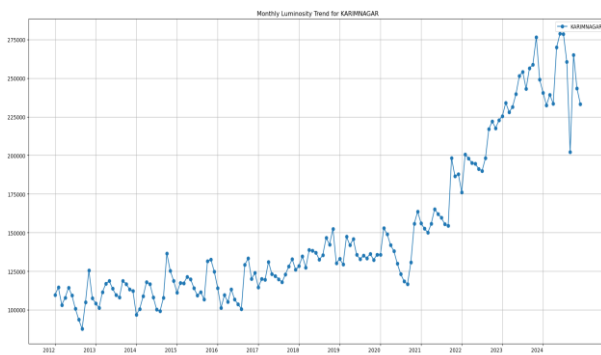
Overall Rank: 21 (4 ↓) Growth Rank: 351 Size Rank: 11

Karimnagar is known for its agriculture, especially rice and red gram. It is also a growing industrial hub with focus on steel and cement industries.

Population: 4.0 mn

Land Area: 2,128 Sq. KM

Exported Product	Annual Value (in Cr)	Major Economic Clusters	Main Product
Minerals & Construction Materials	688	Agricultural cluster, industrial cluster	Rice, Pineapple
Articles Of Stones	52		



Udyam Registrations	Count
Micro	34,409
Small	476
Medium	20
Total	34,905

Ramgarh, JH

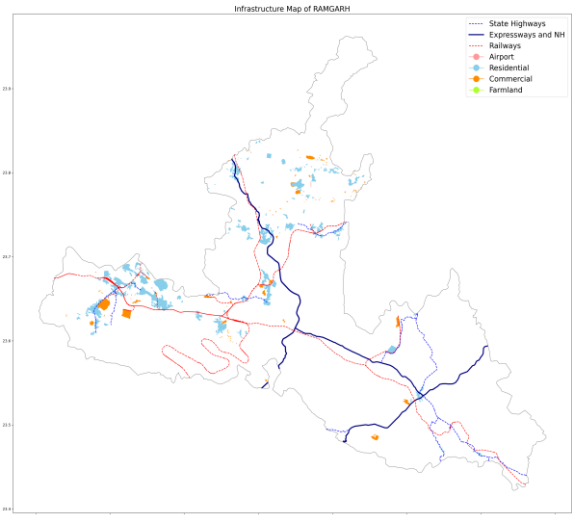
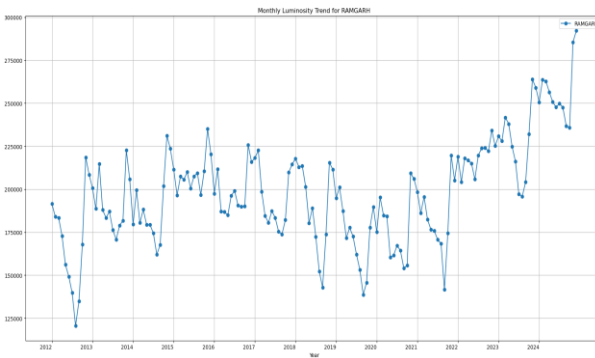
Overall Rank: 22 (11 ↑) Growth Rank: 7 Size Rank: 89

Ramgarh is a hub for mining and power industries, with abundant coal reserves fueling energy production; opportunities exist in setting up ancillary industries and sustainable mining technologies.

Population: 1.1 mn

Land Area: 1,341 Sq. KM

Exported Product	Annual Value (in Cr)	Major Economic Clusters	Main Product
Iron & Steel	502	Steel & Engineering Cluster	Coal



Udyam Registrations	Count
Micro	17,588
Small	245
Medium	14
Total	17,847

Sonipat, HR

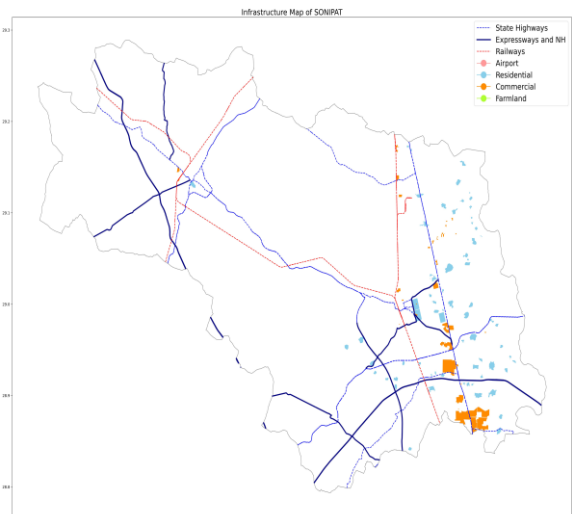
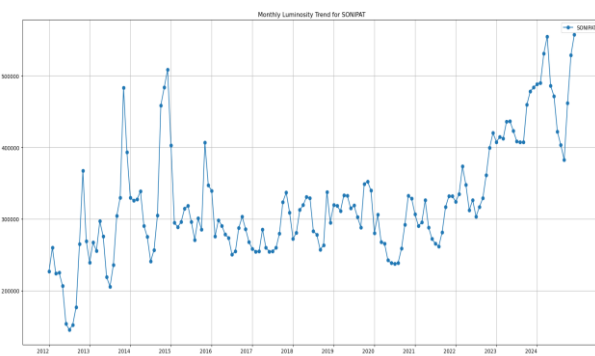
Overall Rank: 23 (3 ↓) Growth Rank: 156 Size Rank: 21

Sonipat has a thriving agricultural economy driven by high-quality basmati rice and wheat production. The city benefits from proximity to Delhi-NCR, offering business opportunities in agro-processing, warehousing, and export of food products.

Population: 1.6 mn

Land Area: 2,260 Sq. KM

Exported Product	Annual Value (in Cr)	Major Economic Clusters	Main Product
Auto Components	1,524	Automobile Parts & Food Processing Cluster	Basmati Rice



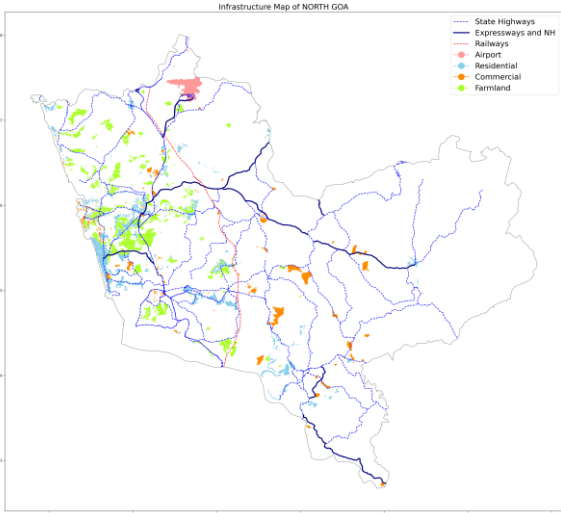
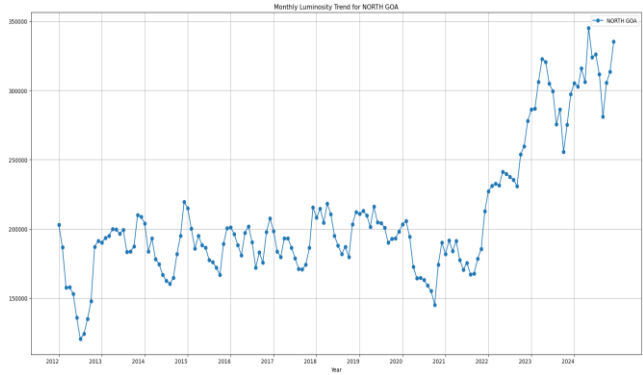
Udyam Registrations	Count
Micro	35,074
Small	809
Medium	58
Total	35,941

North Goa, GA

Overall Rank: 24 (27 ↑) Growth Rank: 23 Size Rank: 64

North Goa has a strong tourism economy with opportunities in eco-tourism and cultural tourism. It is known for cashew nut cultivation and Feni production, with scope for value-added products, export markets, and Population: 0.9 mn Land Area: 1,736 Sq. KM

Exported Product	Annual Value (in Cr)	Major Economic Clusters	Main Product
Organic Chemicals/ Pharmaceutical Products	841	Tourism, Cashew and Feni Production Cluster	Cashew Nuts and Feni



Udyam Registrations	Count
Micro	31,694
Small	712
Medium	64
Total	32,470

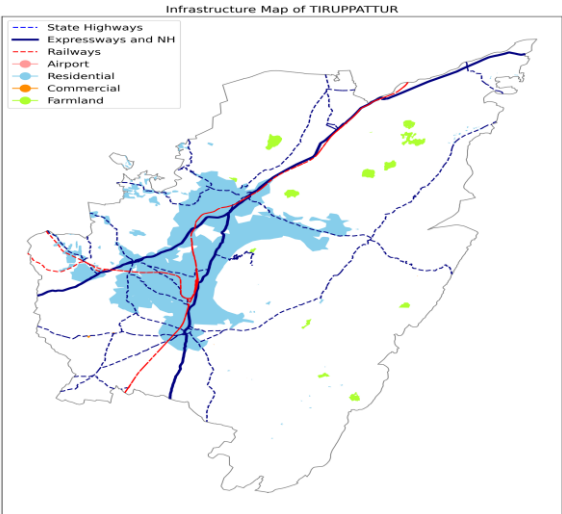
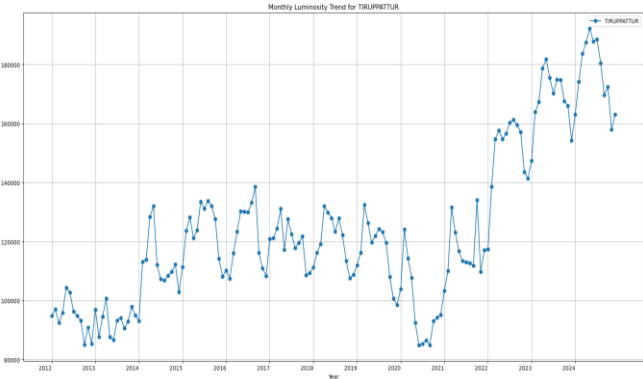
Tiruppattur, TN

Overall Rank: 25 (6 ↑) Growth Rank: 150 Size Rank: 24

The city is known for sandalwood and silk production, offering investment potential in luxury goods and handloom industries. It has strong agriculture base with opportunities in horticulture and organic farming.

Population: 2.2 mn Land Area: 1,831 Sq. KM

Major Economic Clusters	Main Product
Handicrafts and Textiles Cluster	Sandalwood and Silk

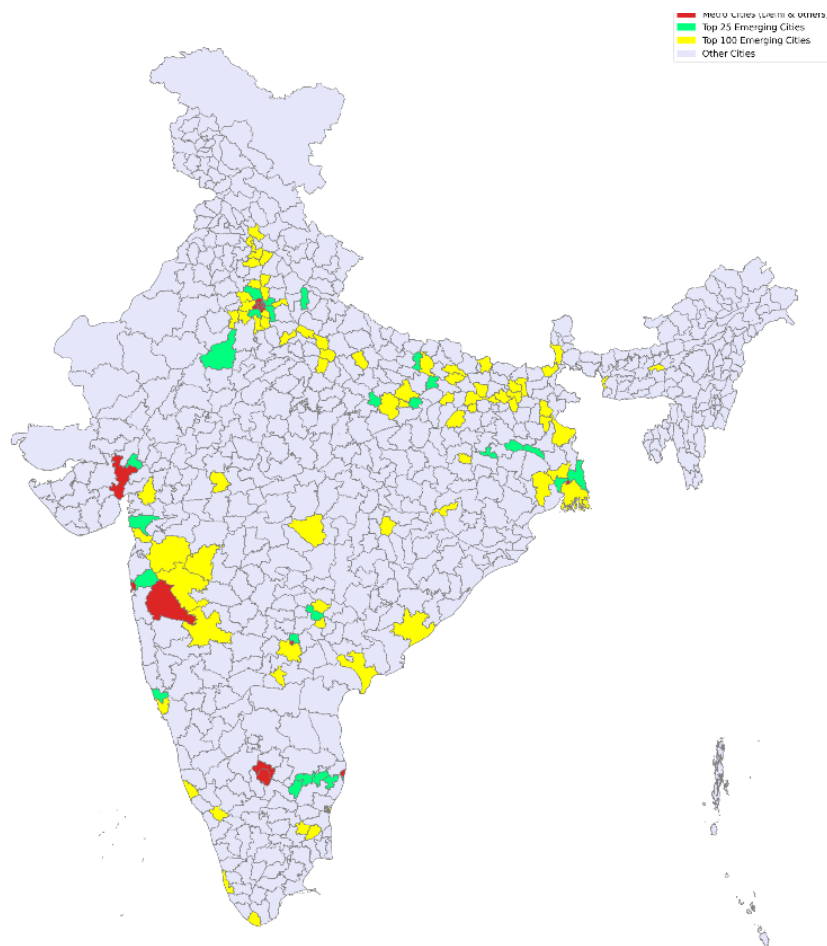


Udyam Registrations	Count
Micro	27,144
Small	97
Medium	1
Total	27,242

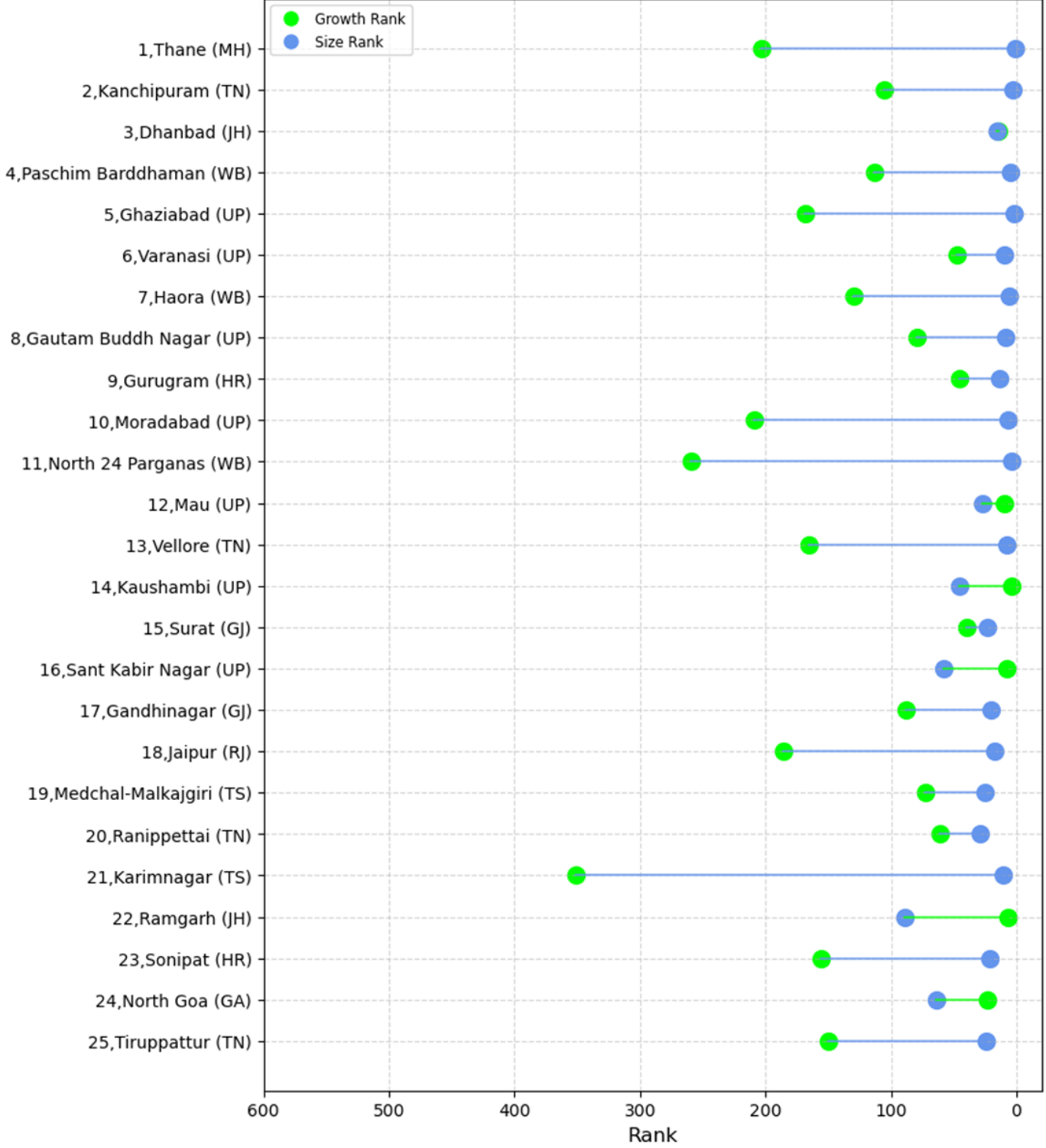
Top 100 Emerging Cities

The CVI ranks the top 100 non-metro cities based on their economic size, growth momentum, and overall vitality. This includes rankings for growth, size, and a combined score to present a holistic view of economic dynamism. The report indicates the list of the top 100 emerging cities in the charts below, providing their composite ranks as well as on growth (green dot) and size (blue dot). A city ranking high on size but low on growth indicates near saturation level in terms of economic activity as the growth is slower; however, the city is still ranking higher primarily on account of its bigger size. Whereas cities with high growth ranks but lower size ranks indicate better ranking prospects in future as their sizes increase due to faster near-term growth.

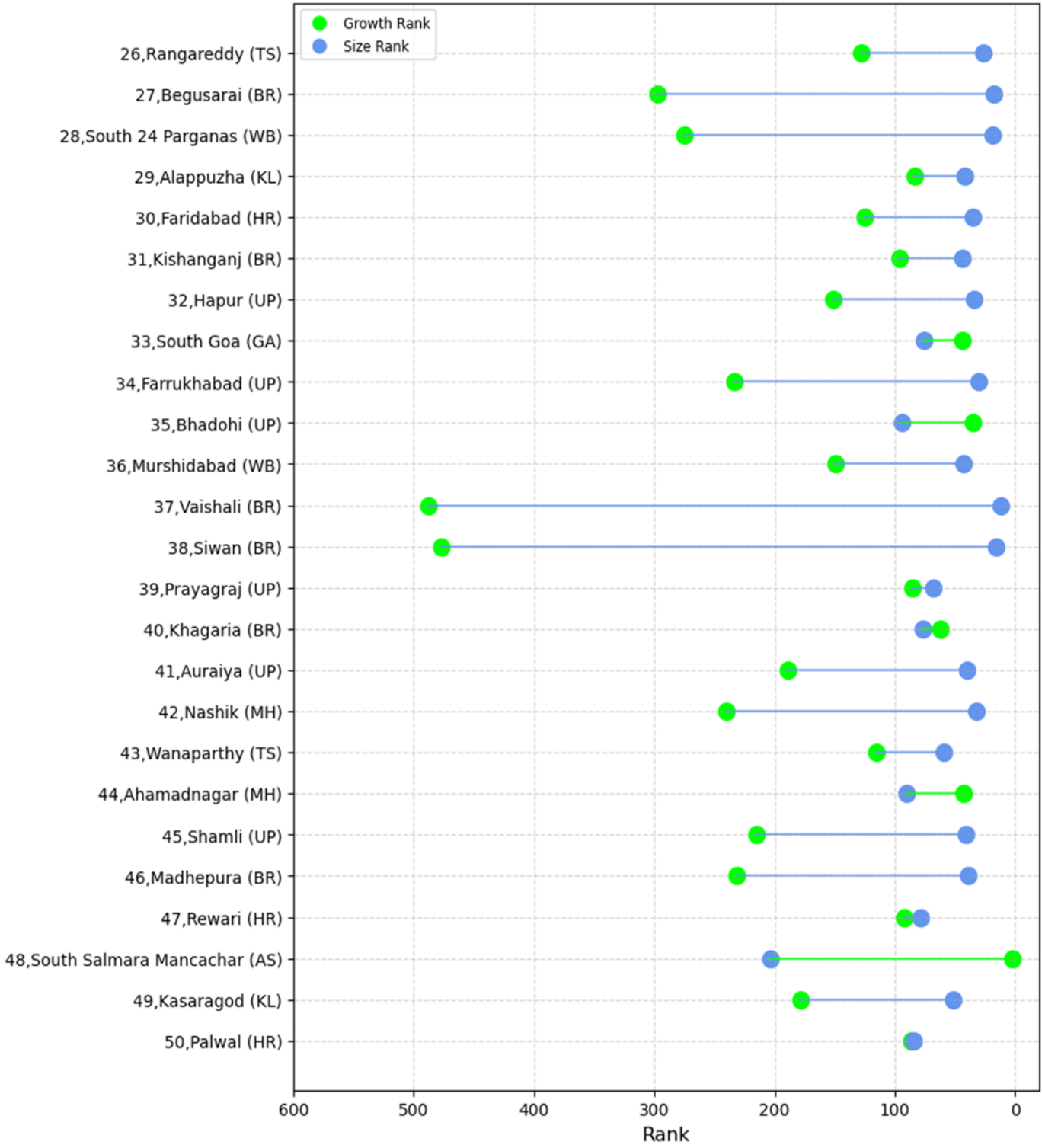
Pan-India Distribution of the Top 100 cities (CVI Ranks) - Q1 2025



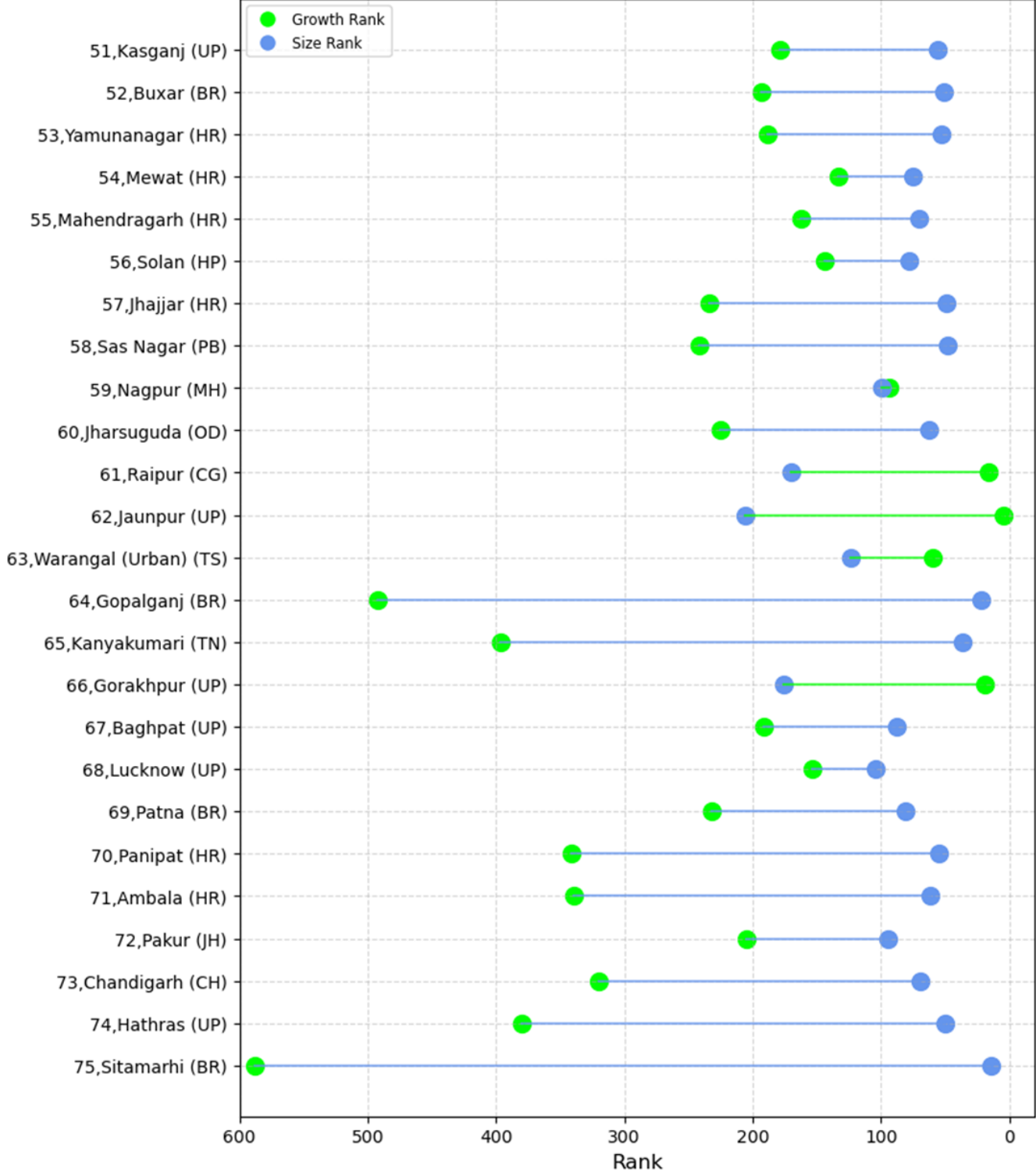
Growth and Size Ranks by District



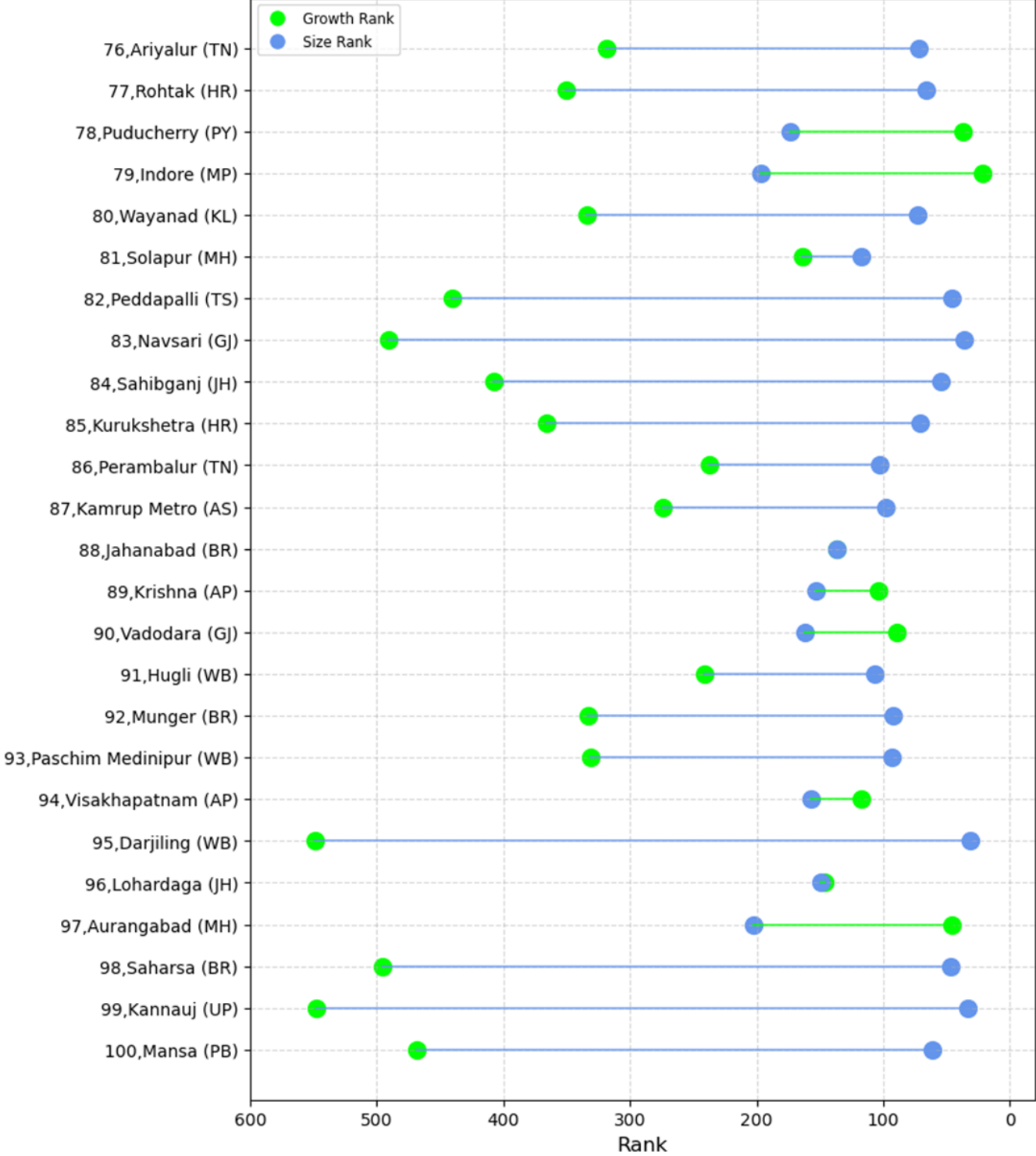
Growth and Size Ranks by District



Growth and Size Ranks by District



Growth and Size Ranks by District



Appendix

THANE, MH

Overall Rank: 1 (1 ↑)

Overall rank and the change from the previous quarter

Growth Rank: 203

Growth rank based on year-on-year growth and the size rank based on population and landmass.

Size Rank: 1

Critical infrastructure network within city

Demographic profile & geographical area of the city

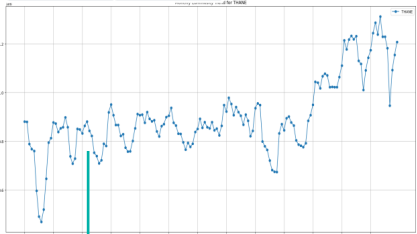
Known for urbanization, business hubs, and proximity to Mumbai. It has natural beauty with lakes and forests, making it a residential hub.

Population: 11.1 mn Land Area: 4,214 Sq. KM

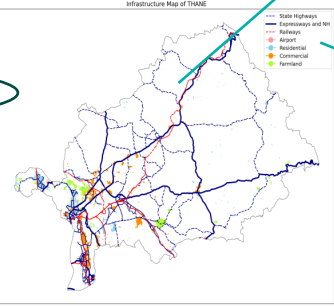
Major exported products and average annual export value in INR crores.

Exported Product	Average Annual Value(in crores)	Major Economic Clusters	Main Product
Iron And Steel	2,239	Textiles, Chemicals, Automobiles ,IT	Mango (Alphonso)
Organic Chemicals/Pharmaceutical Products	1,624		

Adjacent cells provide information on major economic clusters & key products



Trend in economic activity (Luminosity, Sum of Lights): Higher value indicates higher level of economic activity generating night light in the city
 X axis: Year
 Y axis: Luminosity measured in Micro watts steradian (MWA)



Map legend

- State Highways
- Expressways and NH
- Railways
- Airport
- Residential
- Commercial
- Farmland

Udyam Registrations	Count
Micro	422,654
Small	7,249
Medium	674
Total	430,577

Number of MSME registrations on UDYAM portal for the respective district (December 2024)

The information contained in this electronic message and any attachments to this message are intended for the exclusive use of the addressee(s) and may contain proprietary, confidential, or privileged information. It should not be used by anyone who is not the original intended recipient. If you receive this transmission in error, please notify the sender by reply email and then destroy the message.). Internet communications cannot be guaranteed to be timely, secure, error or virus-free. The recipient should check this e-mail and any attachments for the presence of viruses/malware. While Dun & Bradstreet Information Services India Private Limited ("Dun & Bradstreet") takes reasonable commercial efforts to avoid transmitting any virus / malware, however, Dun & Bradstreet accepts no liability for any damage caused by any virus/malware transmitted by e-mail. Dun & Bradstreet does not warrant that the services will be uninterrupted or error-free and disclaims any warranty or representation regarding accuracy, completeness, currentness, fitness for a particular purpose. Further, Dun & Bradstreet does not accept liability for any direct or indirect damage or liability errors or omissions.

About Dun & Bradstreet

Dun & Bradstreet, a leading global provider of business decisioning data and analytics, enables companies around the world to improve their business performance. Dun & Bradstreet's Data Cloud fuels solutions and delivers insights that empower customers to accelerate revenue, lower costs, mitigate risk and transform their businesses. Since 1841, companies of every size have relied on Dun & Bradstreet to help them manage risk and reveal opportunity. For more information on Dun & Bradstreet, please visit www.dnb.com.

Dun & Bradstreet Information Services India Private Limited is headquartered in Mumbai and provides clients with data-driven products and technology-driven platforms to help them take faster and more accurate decisions in domains of finance, risk, compliance, information technology and marketing. Working towards Government of India's vision of creating an Atmanirbhar Bharat (Self-Reliant India) by supporting the Make in India initiative, Dun & Bradstreet India has a special focus on helping entrepreneurs enhance their visibility, increase their credibility, expand access to global markets, and identify potential customers & suppliers, while managing risk and opportunity.

Get in touch: India@dnb.com or CountryInsight@dnb.com